



# 9.1 Nordic Action Plans – Iceland, Norway, Finland, Denmark & Sweden

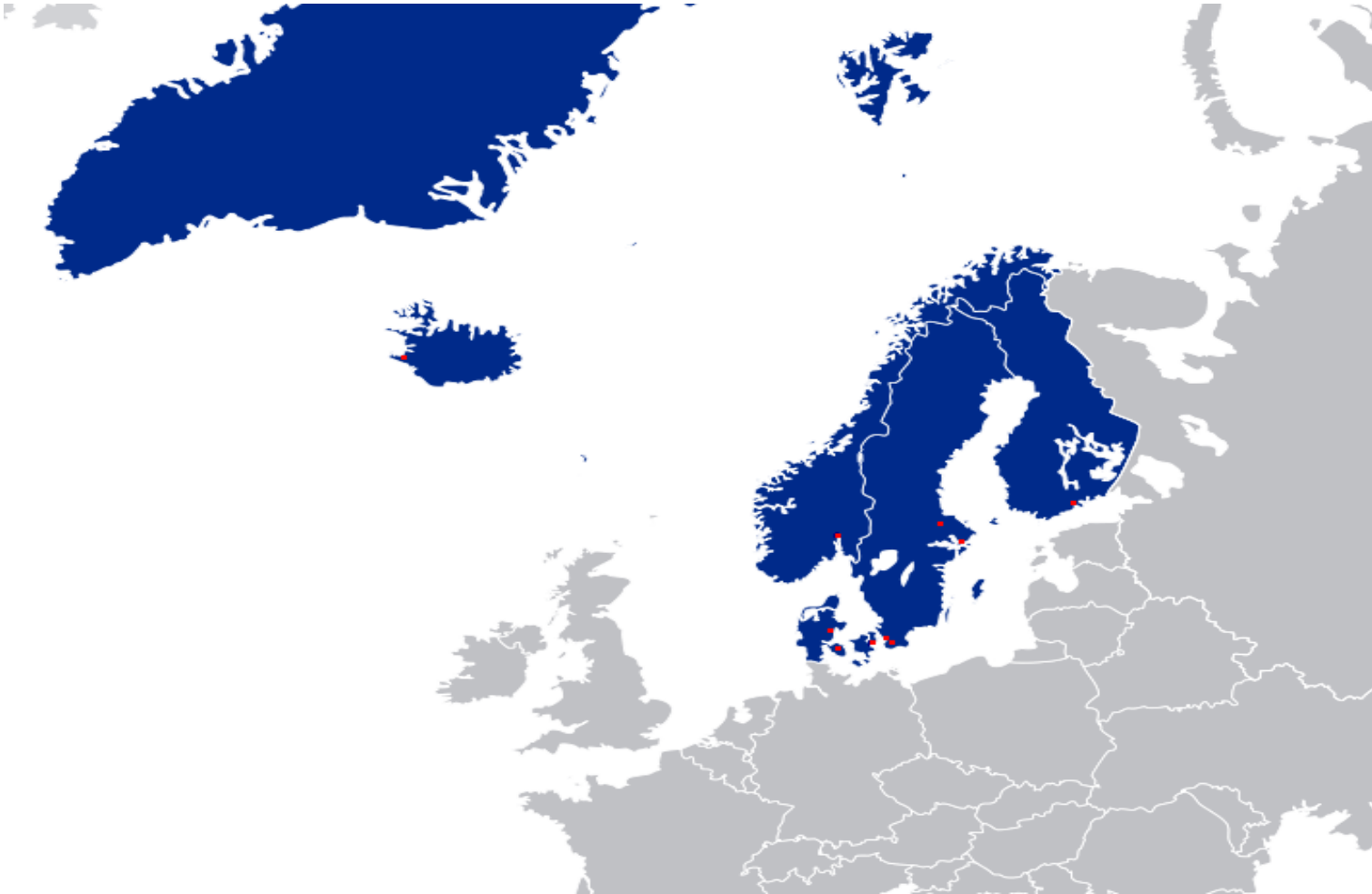
7th Meeting of National Competent Authorities  
for organ donation & transplantation

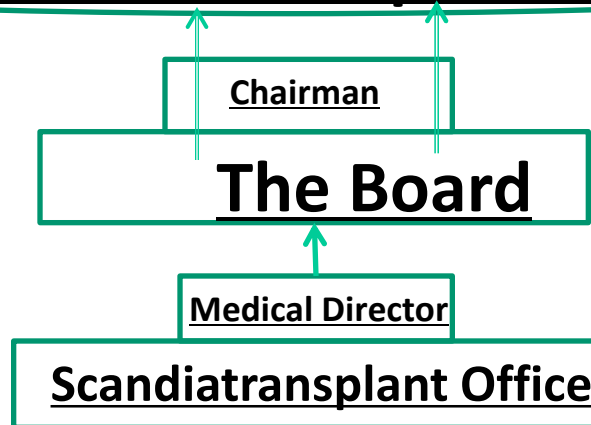
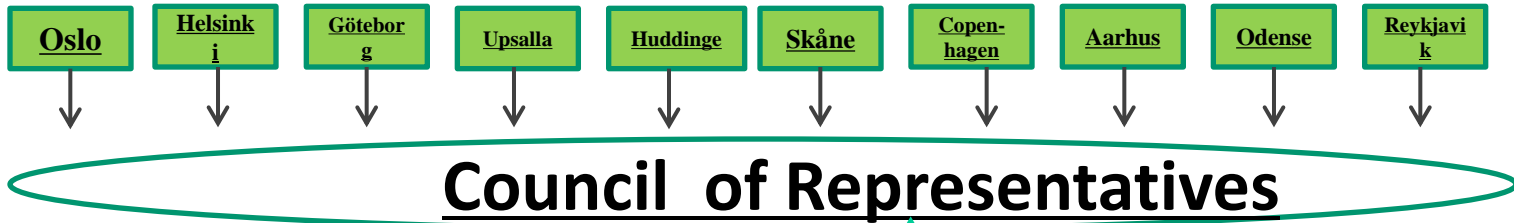
European Commission  
Directorate-General for Health & Consumers  
Unit D4 - Substances of Human Origin Team

Brussels, 18-19. Sept. 2013

Health and  
Consumers

# Scandiatriansplant:





Committees	Orga
NKG (Kidney all)	
NLDR (Living kidney donor - family and friends)	
NPRTSG (Kidney pediatric - special care)	
NLTG (Liver all)	
NTTSG (Thorax all)	
NTCG (Coordinators)	
STAMP (Program for long time waiting Kidney patients)	
NTC (Nordic health authorities)	
STTG (Tissue Typer)	
Pancreatic islet group	
Pancreatic group	

# Scandiatriplant 2012

*440 Utilized deceased donors (17.14 PMP )*

*1822 organ transplants performed*

*1116 kidneys (330 were living related)*

*353 livers (7 were living related – 4 were domino)*

*126 hearts*

*145 lungs including heart/lung*

*64 pancreas'*

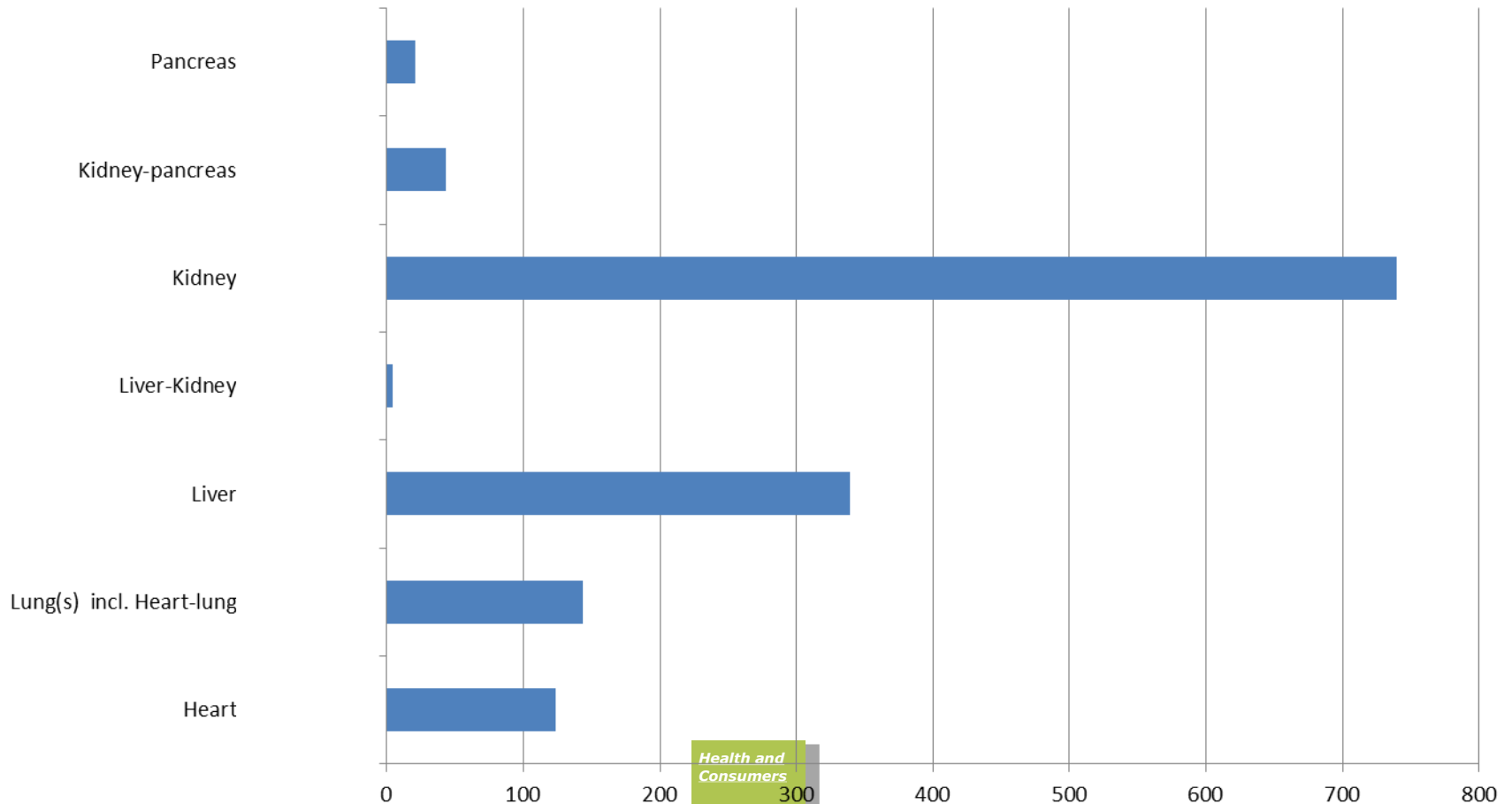
*14 islets*

*4 intestines*

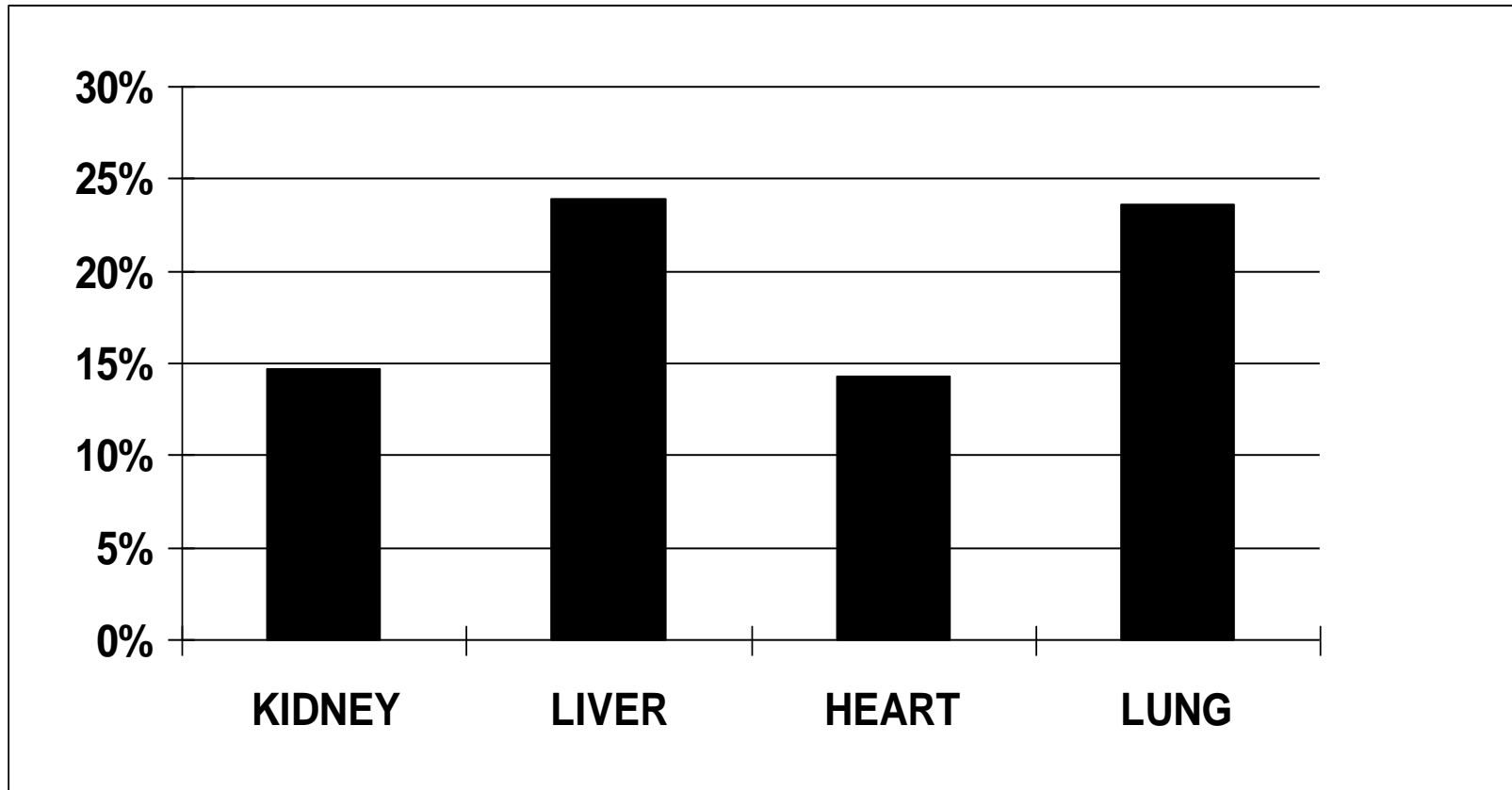
*2116 patients on waiting list at end 2012*

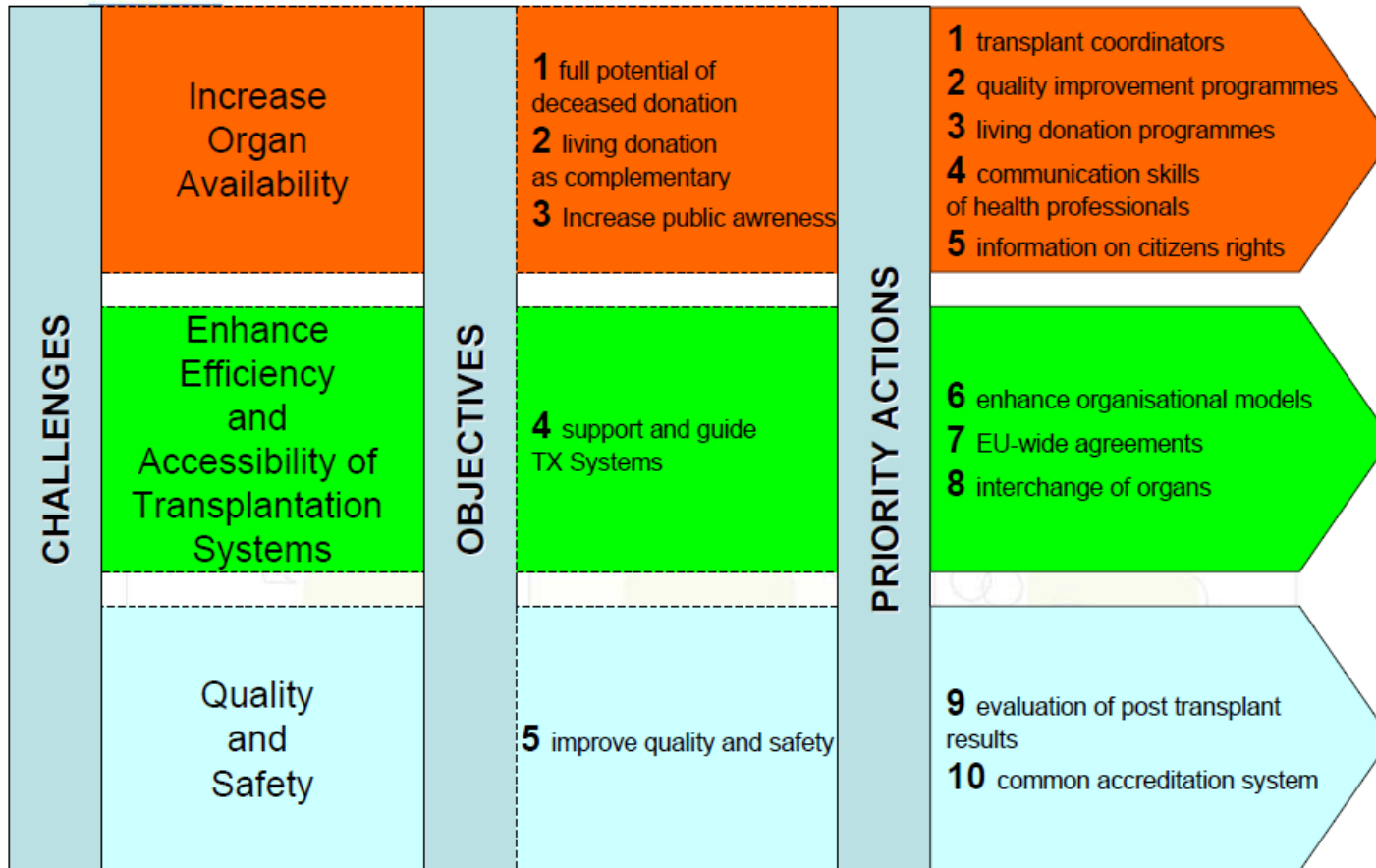
# Number of patients transplanted 2012

## Number of patients transplanted pr. donor: 3.2



# Organ exchange between centres 2012





WG

PROJECTS



*Nordic Transplantation Coordinator Group – NTCG*

*<http://www.scandiaintransplant.org/members/ntcg>*

*With two meetings a year*

*Ad hoc correspondence on problems concerning the Nordic network, and day to day problems with the system throughout the year.*

*Common forms for organ-allocation, donor-forms, labeling of organ-boxes etc.*

*<http://www.scandiaintransplant.org/organ-allocation/forms>*

*Issues to address: Each center has its own definition of a coordinator*





### Online Quality control for the users of the database (ongoing):

1. Mismatching Waiting List Urgency-Status
2. KI patients long-term Not Transplantable
3. Actively waiting KI patients with no HLA
4. Actively waiting KI patients with no Bw4/Bw6
5. Realized donations with no HLA
6. Actively waiting patients with conflicting sero/geno HLA
7. Exported organs with no cause of export
8. Organs with mismatching recipient- and organ-to-center centers
9. Missing organ usage registration
10. Actively waiting KI patients with no immunization status
11. Actively waiting, immunized KI patients, tested >1 year ago
12. Actively waiting patients with obsolete HLA for match
13. Actively waiting patients with obsolete repeated mm HLA
14. Duplicate patient registrations
15. Missing transplantation registration
16. Missing transplantation dates
17. Lung waiting list high urgency history
18. Organ Exchange Compliance Log



## *Nordic Living Donor Registry – NLDR*

*The registry has been in use for many years*

*Registration of transplantation and donor data is obligatory.*

*Registration on Donor follow up is voluntary in Scandiatransplant.*

*[http://www.scandiatransplant.org/organ-allocation/Manual\\_LDR\\_tx.reg\\_30nov2011.pdf](http://www.scandiatransplant.org/organ-allocation/Manual_LDR_tx.reg_30nov2011.pdf)*



*The Scandiarttransplant office provides authorities and patient support groups with relevant information.*

## Priority Action 5: Facilitate the identification of organ donors across Europe



*All deceased and living donors used in Scandiatransplant are registered in the central database.*

*All exported organs outside Scandiatransplant are identified and connected with the donor.*

*All not harvested/transplanted organs are stated with an explanation.*

*All recipients in need for an organ must be registered in the common Nordic database*



*Scandiatransplant is the official OEO for the 5 Nordic countries.*

*<http://www.scandiatransplant.org/about-scandiatransplant/organisation/about-scandiatransplant>*

*Every second year The Scandinavian Transplantation Society organizes a 2-day congress.*

*<http://www.sts2014.dk/>*



*The association Scandiatransplant and its members have been and are active in educating personnell from other countries both within and outside the association in transplantation medicine.*

*The association participates actively in finding and suggesting solutions to cross-border problems*



***Strict rules for organ exchange within the Nordic countries***

<http://www.scandiatransplant.org/organ-allocation/guidelines>

***Rota system for surplus Liver, Heart and Lungs***

[http://www.scandiatransplant.org/organ-allocation/Manual\\_Urgent\\_Rotation\\_06oct2011.pdf](http://www.scandiatransplant.org/organ-allocation/Manual_Urgent_Rotation_06oct2011.pdf)

***Webbased organ offer form to be used inside and outside the Nordic countries***

[http://www.scandiatransplant.org/organ-allocation/Manual\\_Organ\\_offer\\_form\\_01jul2013.pdf](http://www.scandiatransplant.org/organ-allocation/Manual_Organ_offer_form_01jul2013.pdf)



*Annual import of Kidney follow up data from the five National registries*

*Hosting Nordic registries for Kidney, Pediatric kidney patients, Liver, Thorax, Living donor*

*Data is used for Annual statistics, Science and export to Multinational registries*





*This is primarily a task for the national authorities.*

*Scandiatriansplant will support with any available registered information.*

# EU Directive 2010/53 and other directives

*Scandiatriplant will adjust according to the EU-directives.*

*Scandiatriplant will support CA with required data.*

Thank you!

