

# The Nordic Pediatric Renal Transplant Study Group



1994-2012

# The Nordic Pediatric Renal Transplant Study Group

---

<b>Aarhus</b>	B Jespersen	<b>Gothenburg</b>	S Hansson S Friman
<b>Copenhagen</b>	I M Schmidt S Sørensen	<b>Malmö</b>	D Karpman R Källén
<b>Odense</b>	H Thiesson K-E Larsen	<b>Stockholm</b>	R Krmar L Wennberg
<b>Helsinki</b>	H Jalanko T Jahnukainen	<b>Uppsala</b>	T Nevéus M Johansson
<b>Oslo</b>	A Bjerre T Scholz	<b>Coordinator</b>	M Larsson

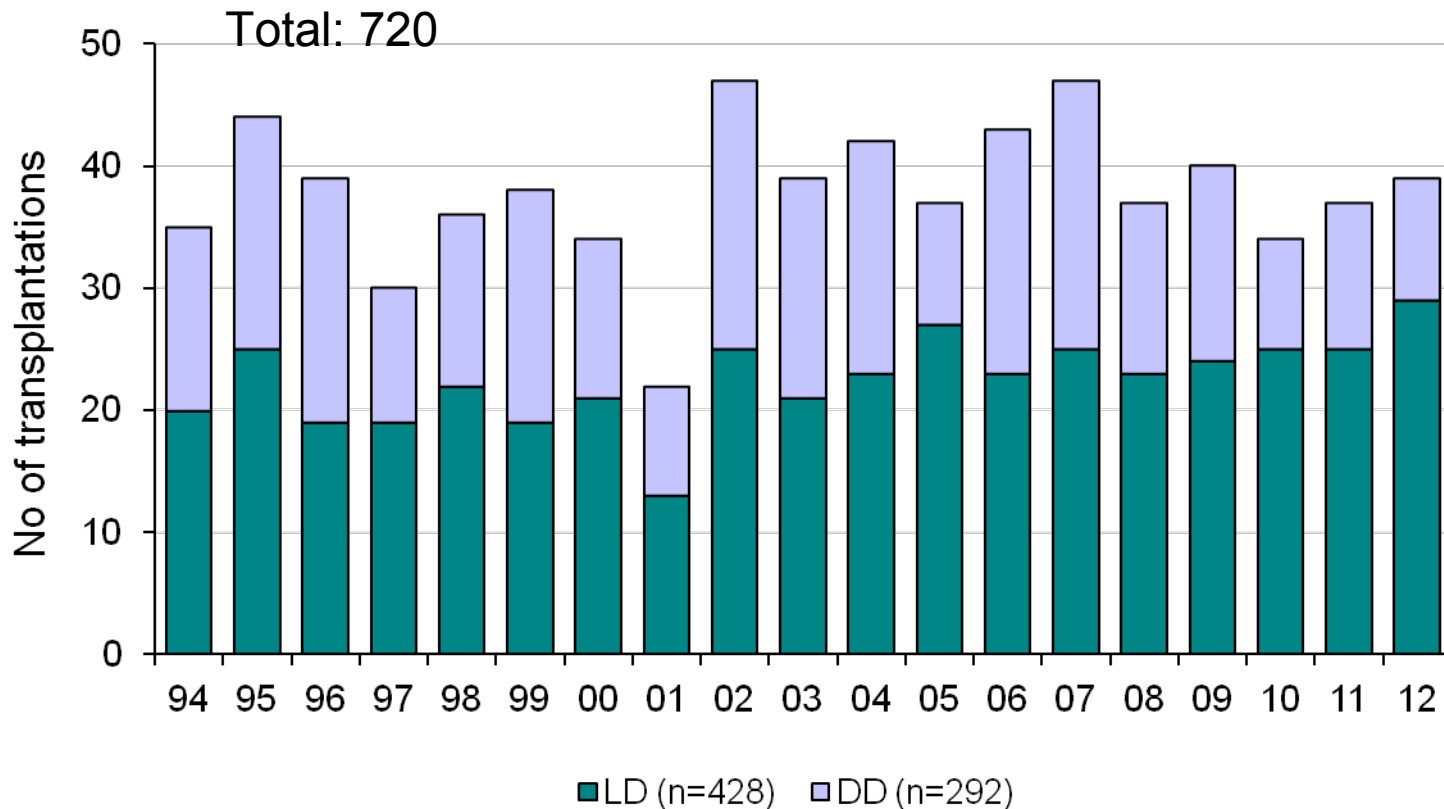
# Activities in NPRTSG

---

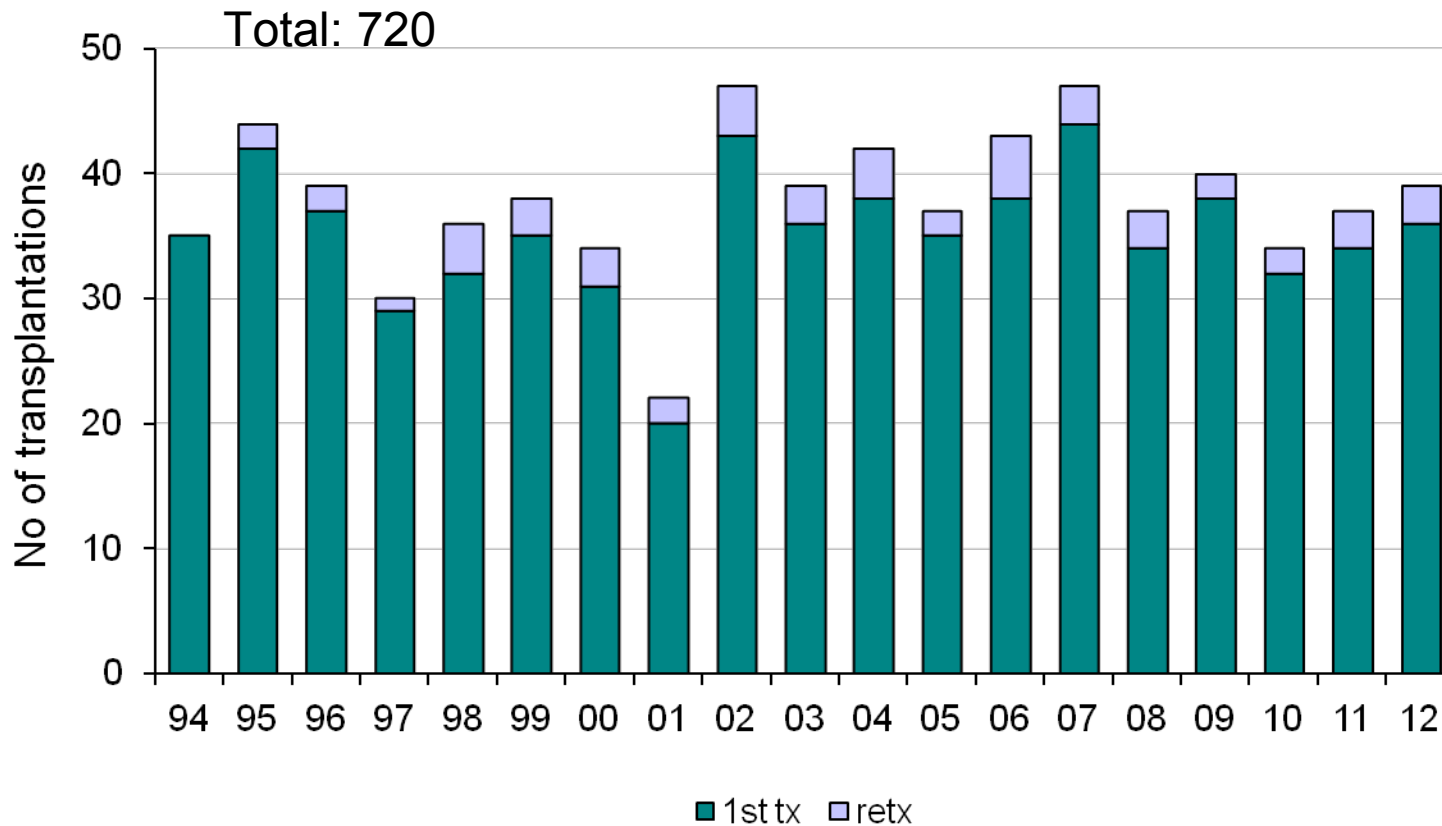
## Workshops

- \*\* Helsinki  
*May 2000*  
General discussion
- \*\* Copenhagen  
*January 2001*  
Pre-emptive transplantation vs dialysis  
Obstructive uropathy
- \*\* Oslo  
*January 2002*  
Hypertension  
Immunosuppressive protocols
- \*\* Helsinki  
*January 2004*  
Renal tx in small children
- \*\* Stockholm  
*March 2006*  
BK virus  
ABO incompatible pediatric transplantations
- \*\* Copenhagen  
*September 2007*  
HUS  
FSGS
- \*\* Oslo  
*September 2008*  
Bone health  
Growth and obesity  
Growth hormone after tx
- \*\* Helsinki  
*March 2010*  
Valganciclovir and herpes virus infections  
Recurrent pyelonephritis  
Donor specific antibodies
- \*\* Stockholm  
*October 2011*  
International Workshop on Peritoneal Dialysis and Ethics in Pediatric  
Renal Replacement Therapy

# NPRTSG database: Pediatric RTx in 1994-2012



# First vs. Re-Tx



# Age distribution of recipients

	No	%	Weight	Age	Sex
<b>All</b>	720	100%	27.8±15.8	8.6±5.0	428 M, 292 F 59% M, 41% F
<b>&lt;2 yrs</b>	124	17%	10.4±1.4	1.4±0.3	75 M, 49 F 60% M, 40% F
<b>2-7 yrs</b>	147	20%	15.3±3.3	4.1±1.5	96 M, 51 F 65% M, 35% F
<b>7-16 yrs</b>	449	63%	37.1±13.2	12.1±2.6	257 M, 192 F 57% M, 43% F

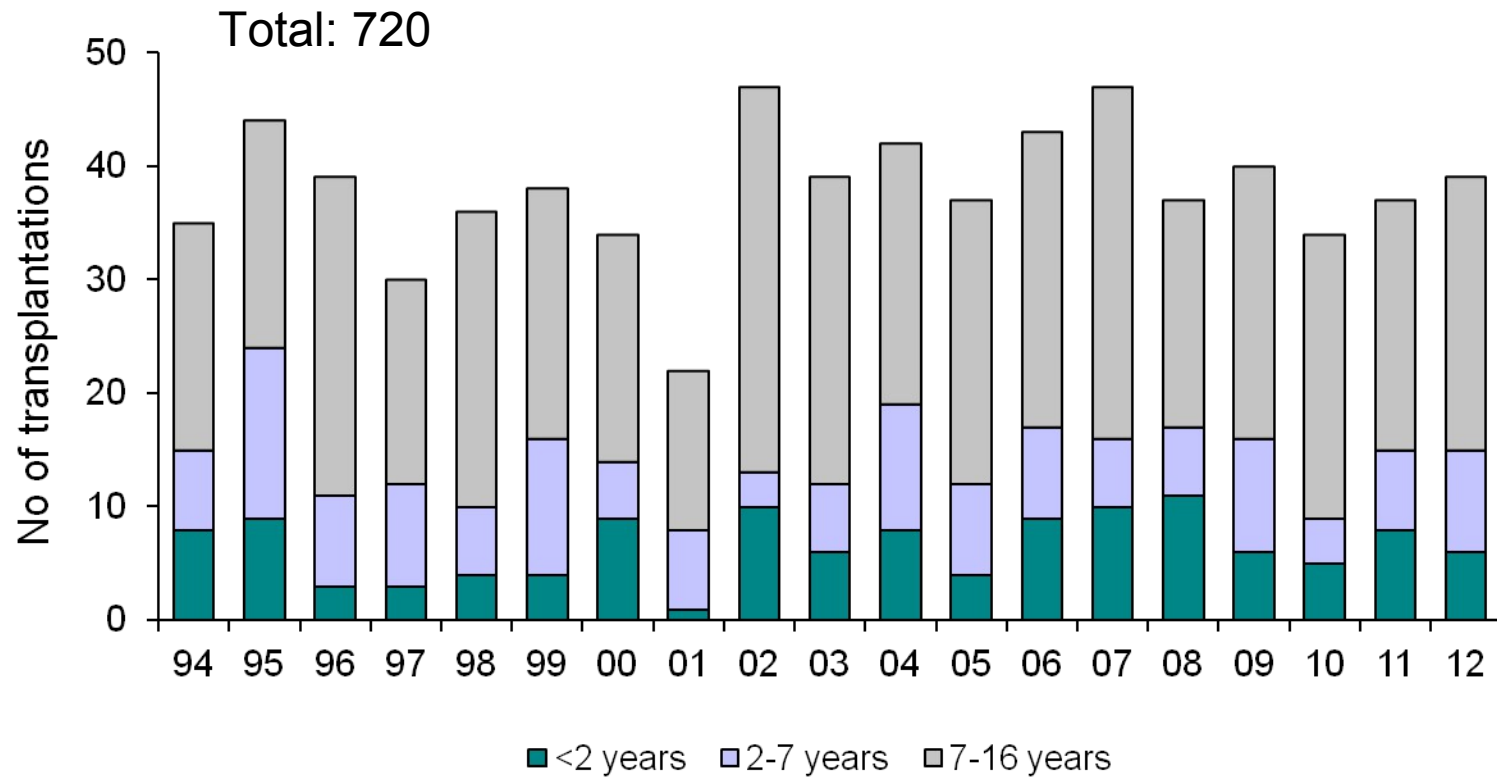
# Age distribution in different countries

---

Age at tx	<2 yrs	2-7 yrs	7-16 yrs
Finland	34%	23%	43%
Sweden	17%	18%	65%
Norway	13%	19%	68%
Denmark	4%	22%	74%
<i>Iceland</i>	-	50%	50%

## Pediatric renal transplantation in the Nordic countries

# Age distribution/year



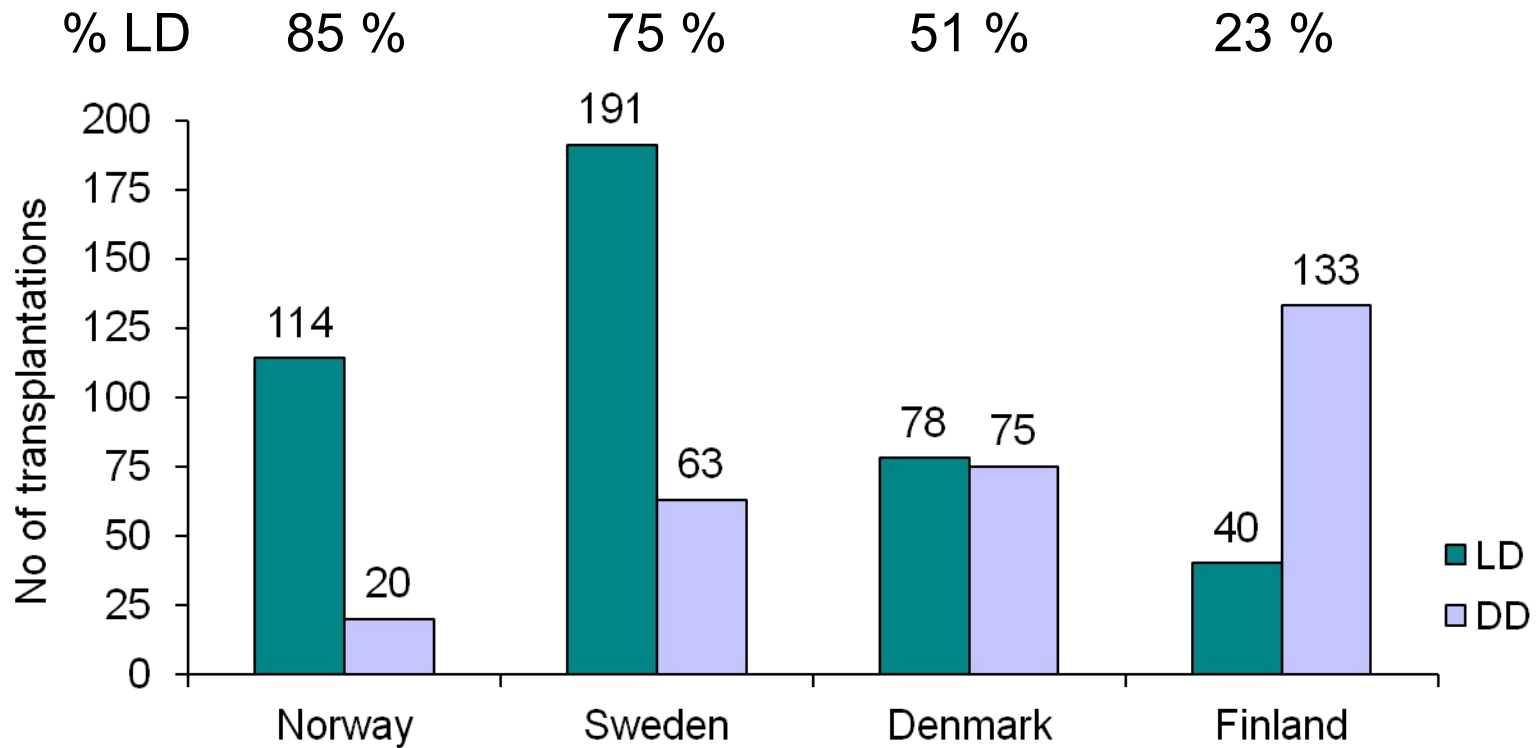


# Donor type

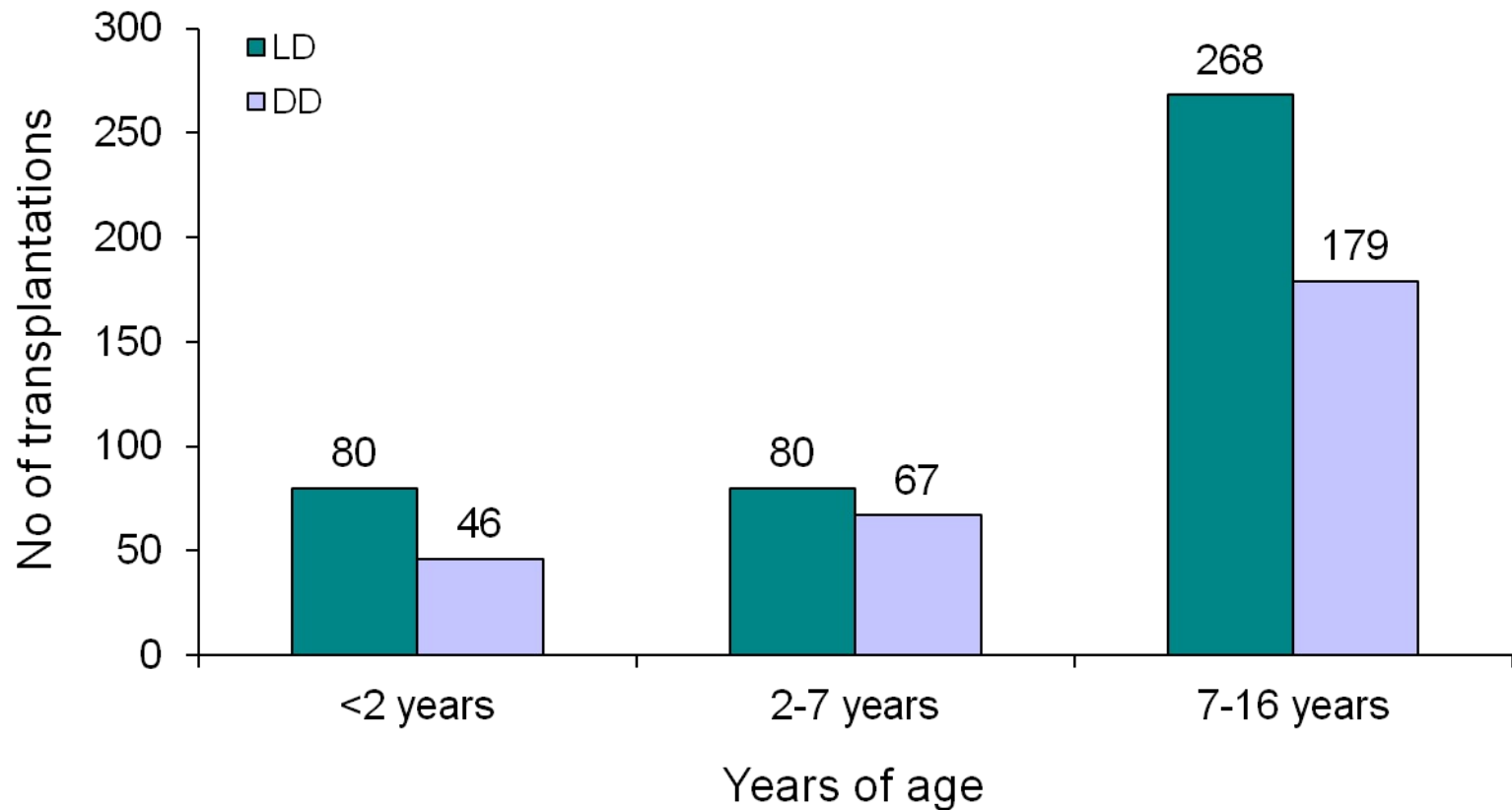
---

	No	%	Age
<b>DD</b>	292	41%	8.7±5.1 (0.8 – 15.9)
<b>LD</b>	428	59%	8.6±5.0 (0.7 – 15.9)
<b>All</b>	720	100%	8.6±5.0 (0.7 – 15.9)

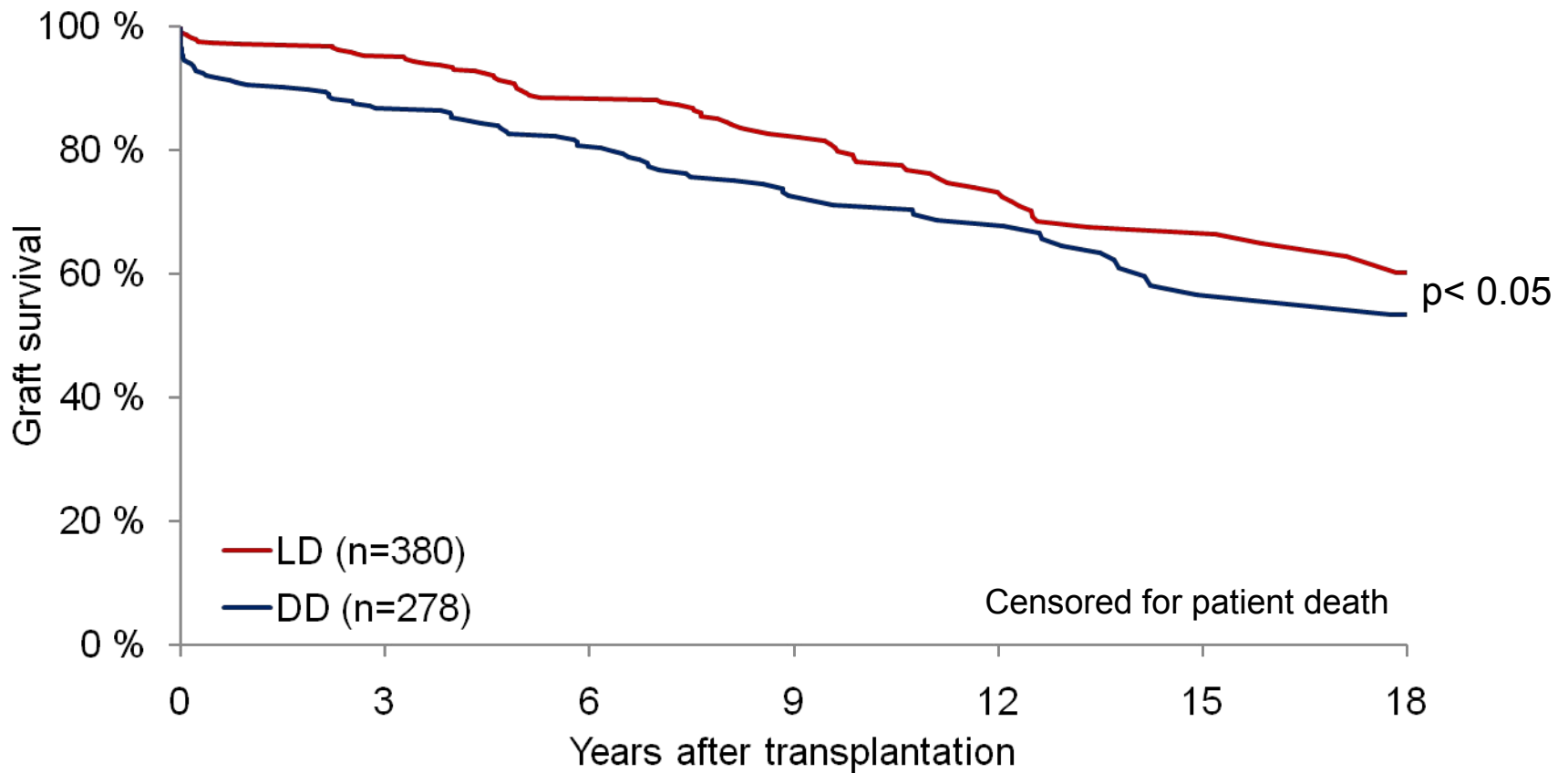
# Donor type in different countries



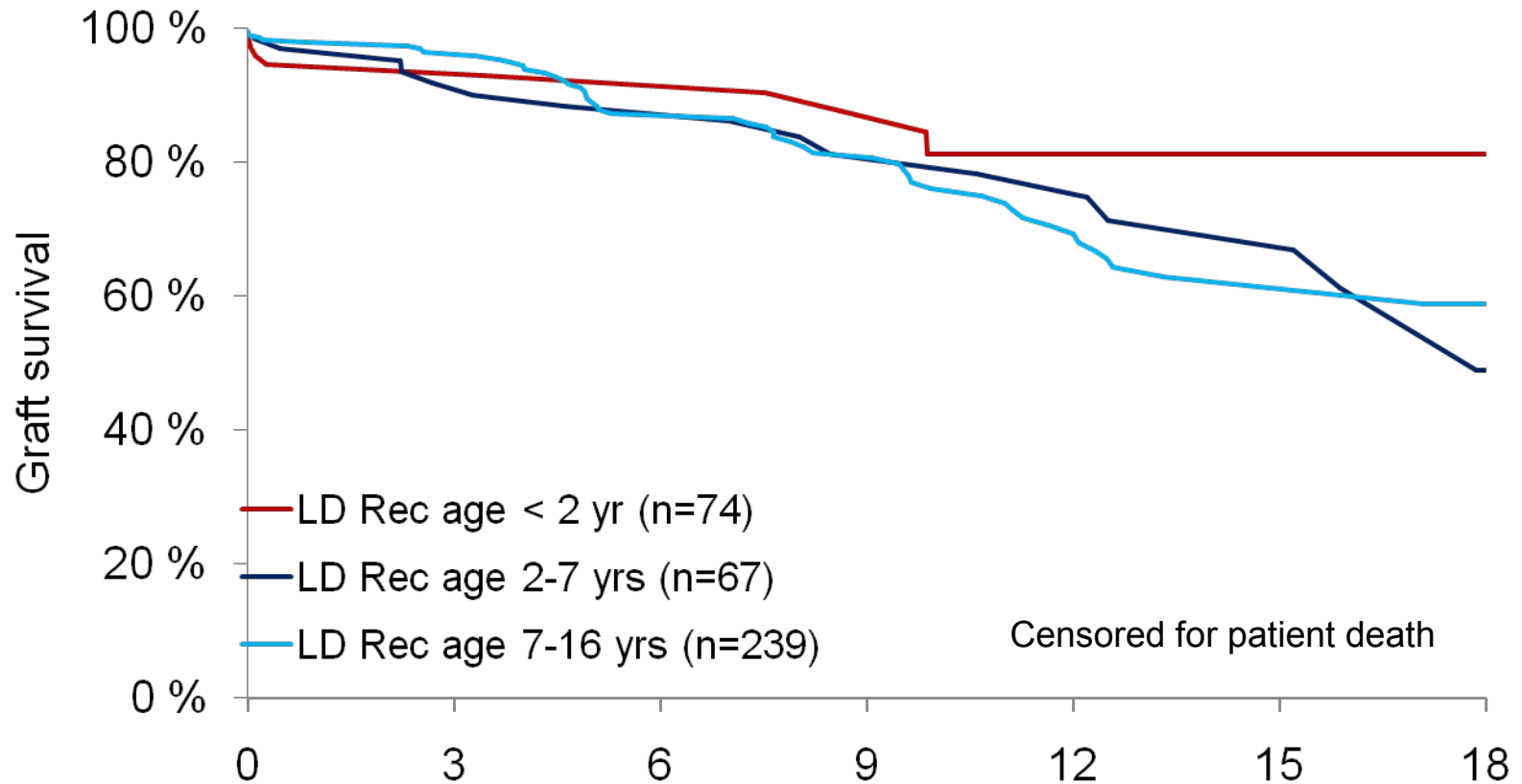
# Donor type in different age groups



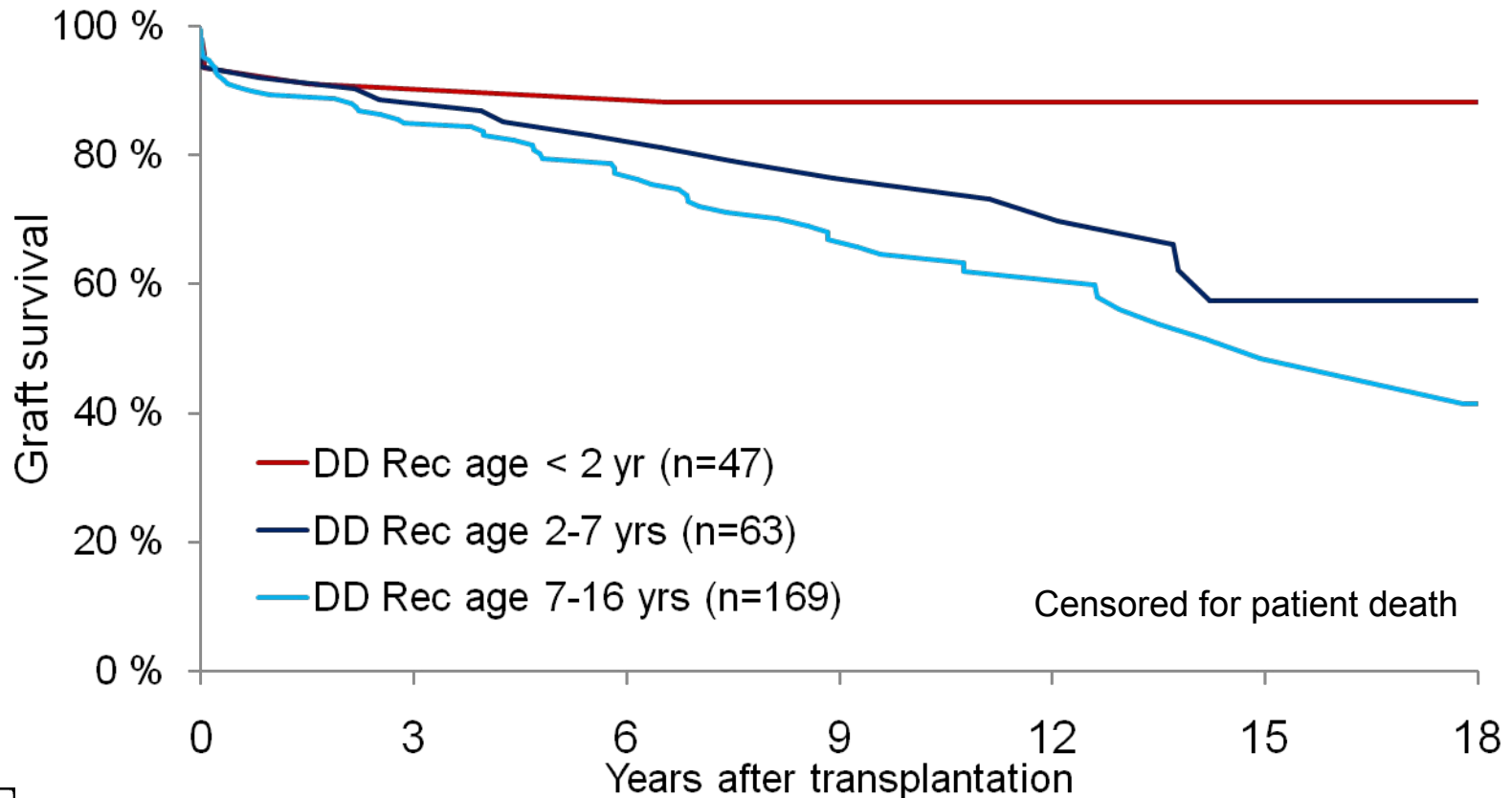
# Graft survival by donor type



# Graft survival in different ages (LD)



# Graft survival in different ages (DD)



# Patient survival

