

# Scandiatransplant Acceptable Mismatch Programme (STAMP)

Accepted by Scandiatransplant  
assembly of representatives, May 2008.

In function from April 2009

Scandiatransplant Tissue Typers Meeting

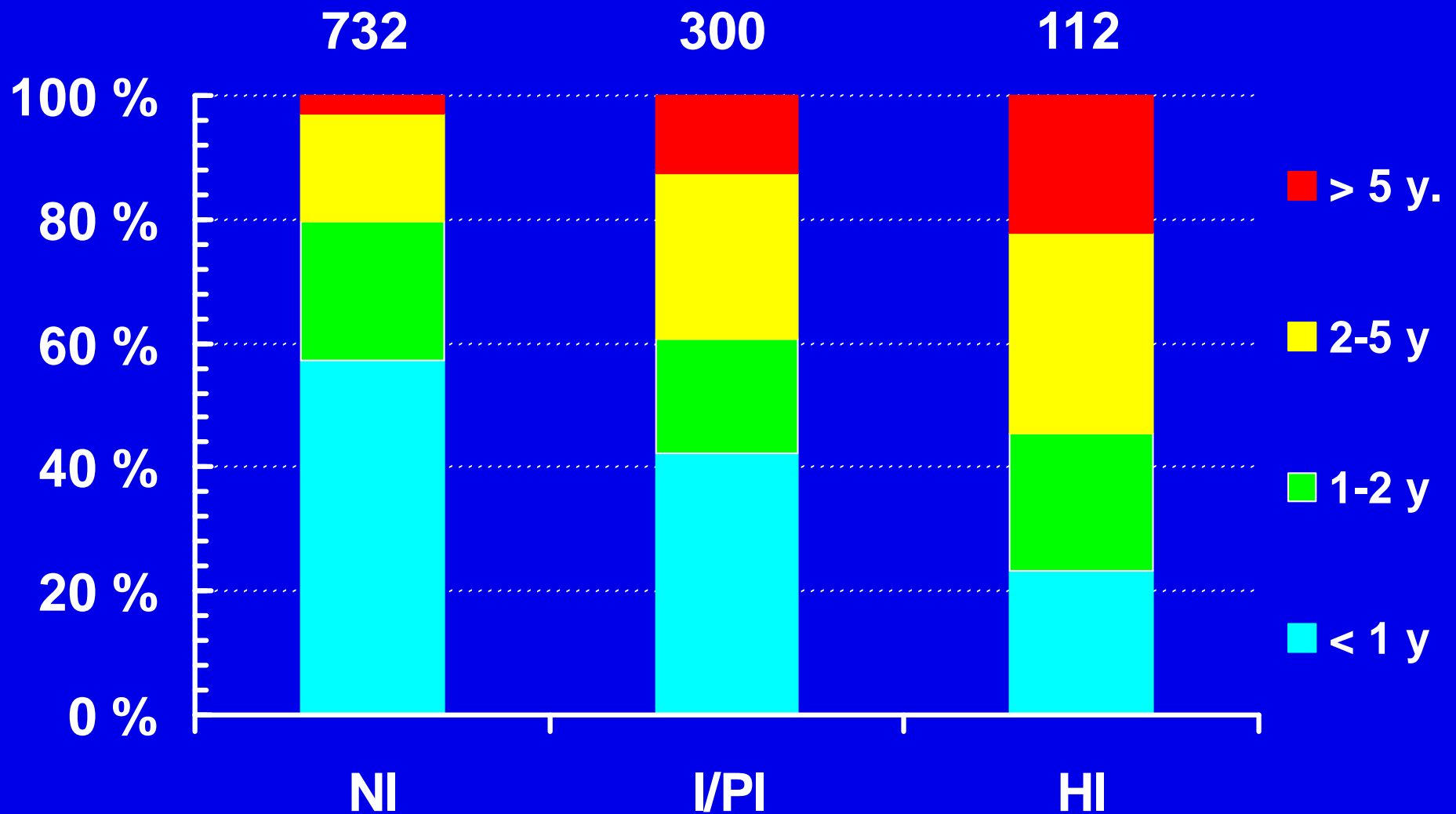
Copenhagen 08.02.2013

v Torbjørn Leivestad

*Situation before acceptance of proposition:*

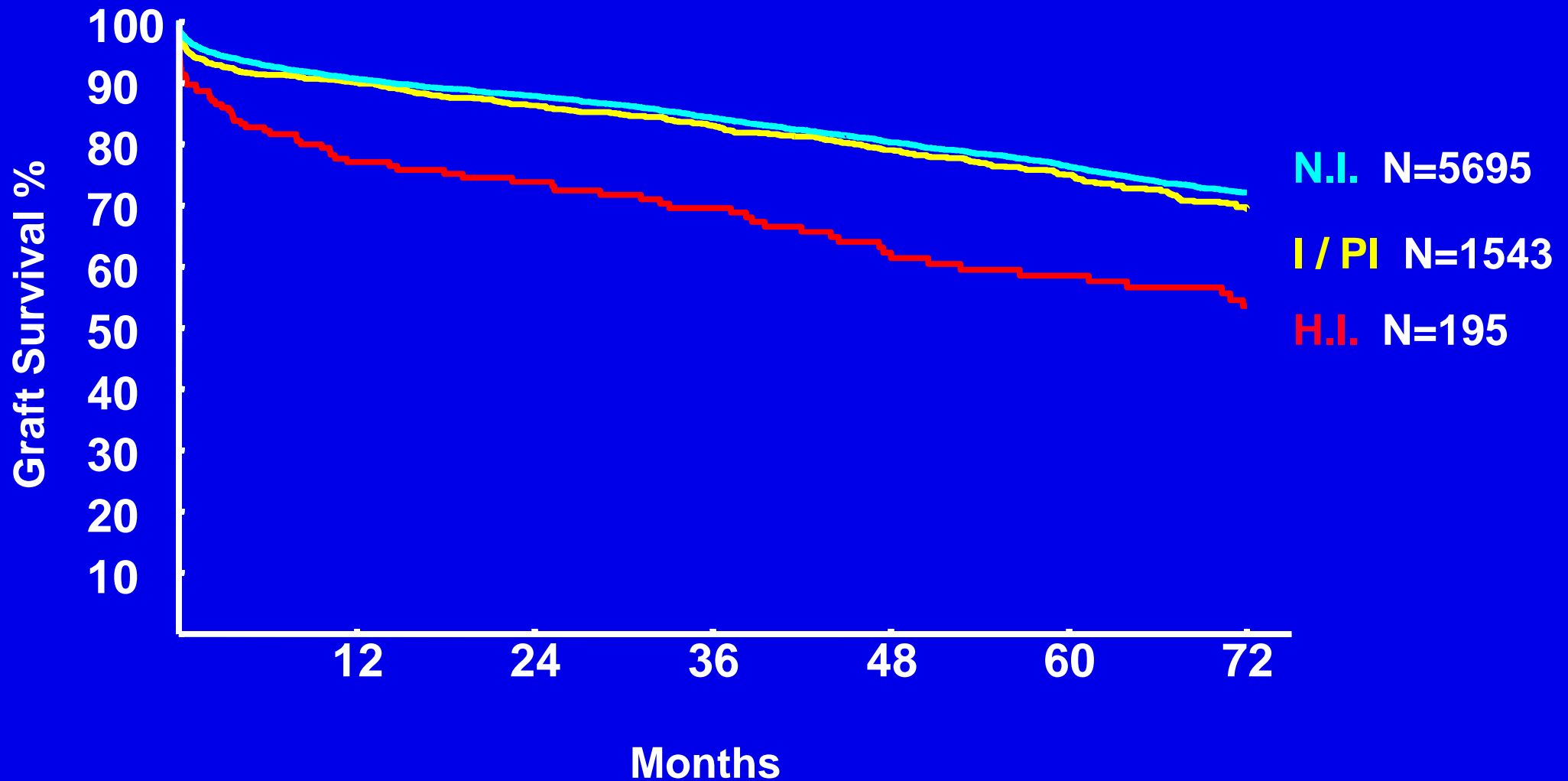
## **Waiting time and immunization**

**Patients on waiting list by 13. May 2008**



# Survival of DD renal grafts

By immunization status. Scandiатransplant, 1995-2006



# Scandia Transplant Acceptable Mismatch Programme - (STAMP)

*Started April 2009*

---

- É Waiting time > 1 y (except children)
- É PRA > 80% (recent & repeatedly)
- É HLA-A,-B,-DR, *later*: +Cw&DQ. Typing: split level
- É HLA-antibodies specified on split level
- É Acceptable antigen mismatches declared ó split level
- É All deceased donors HLA-A,-B,-C,-DR,-DQ typed
- É Obligatory exchange, priority 3 (first years prio.5)

# Waiting list status 19. Nov.2012

---

É Waitlisted active:	1269
É PRA > 80 %:	210 ( <i>waited &gt; 12 m.: 151</i> )
É STAMP total:	68
É STAMP active:	50
É STAMP temp. off:	18
É Withdrawn:	2
É Local öLAMPö:	22 (- 6 NT)

# Activities April 09 ó Oct. 2012

---

É Positive crossmatch: 11

2009:1; 2010: 4; 2011: 6; 2012: none.

É Obligation without exchange: 15, all acceptably explained

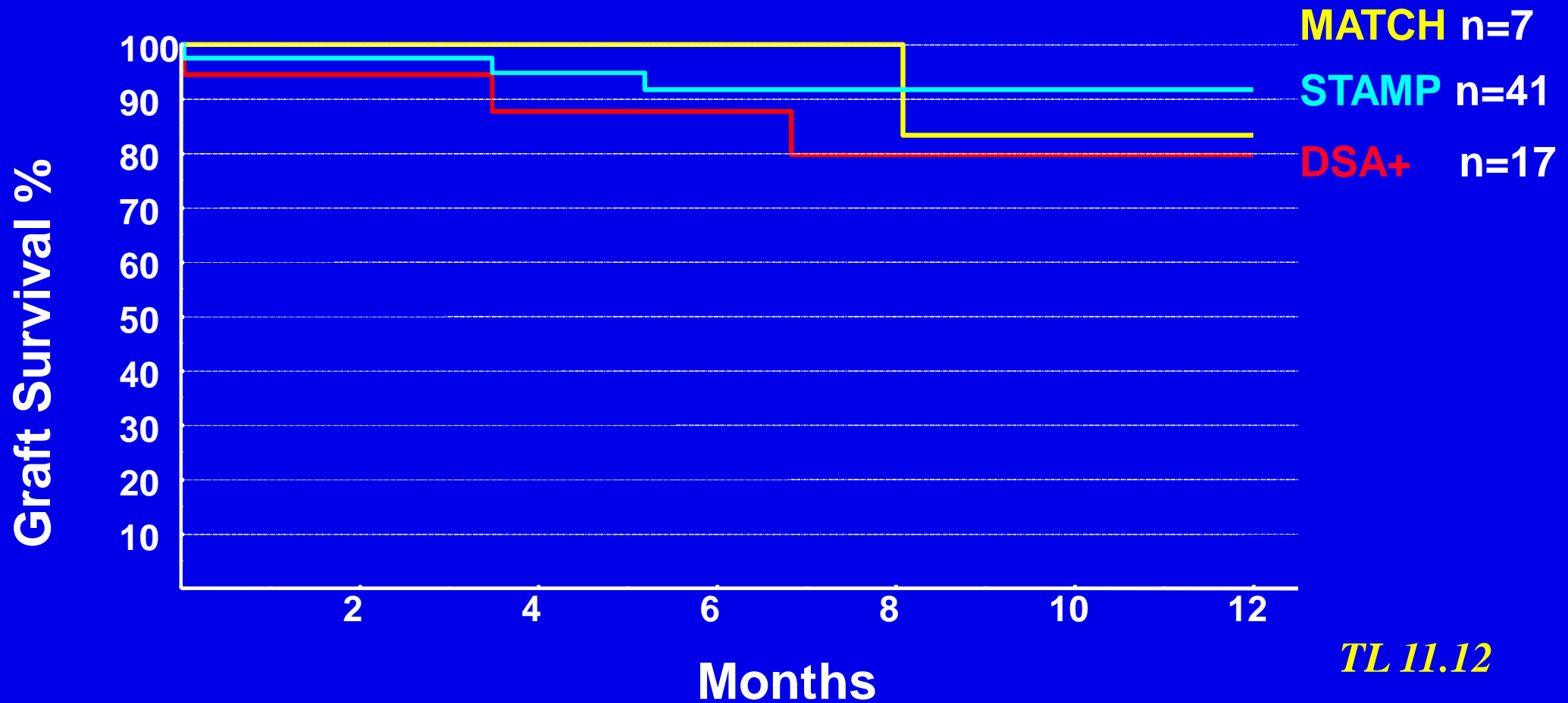
É Prio-1 transplants in öSTAMPö (ABDR-matched): 7

É Performed STAMP-tx: 41

É Tx against DSA in STAMP-pat., neg CDC-xm : 16

É LAMP-tx: 2

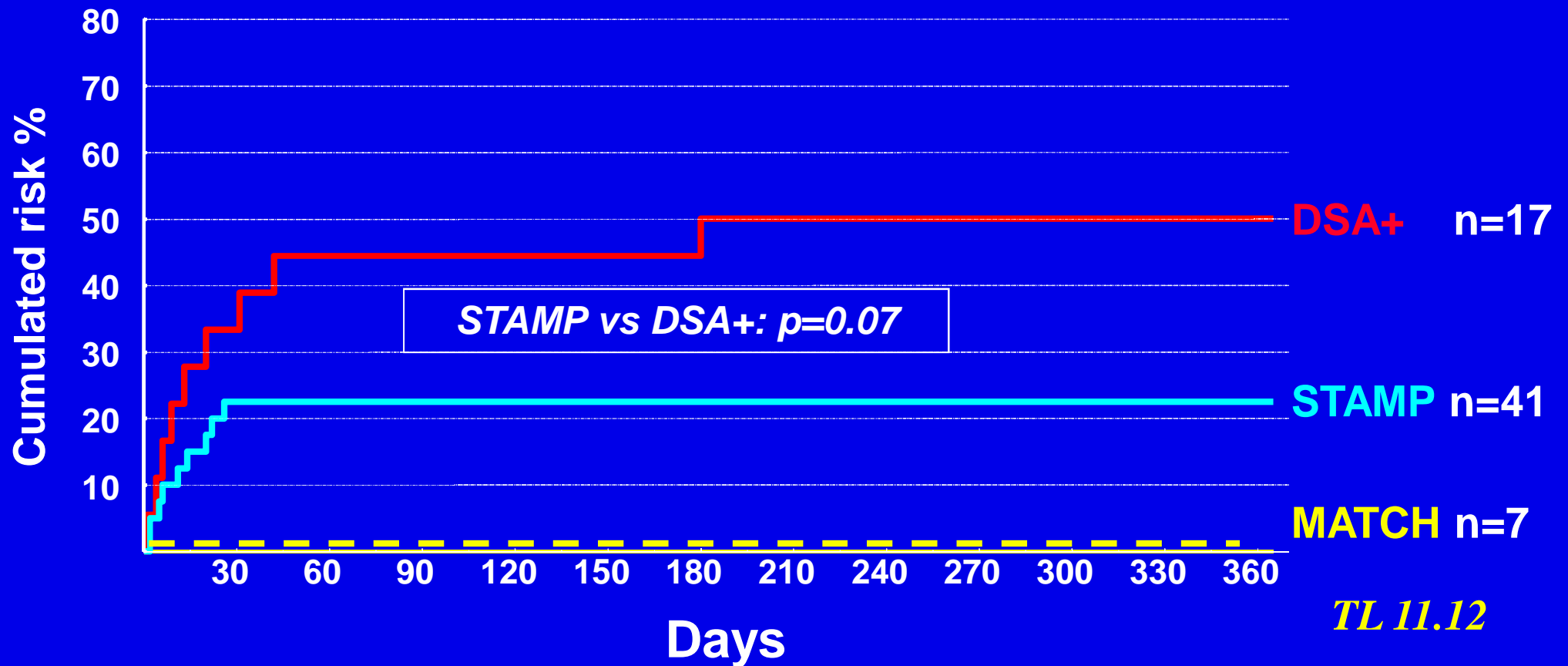
# First year renal graft survival. By STAMP & DSA-status 2009 - 2012



TL 11.12

# Cumulated risk of rejection episodes

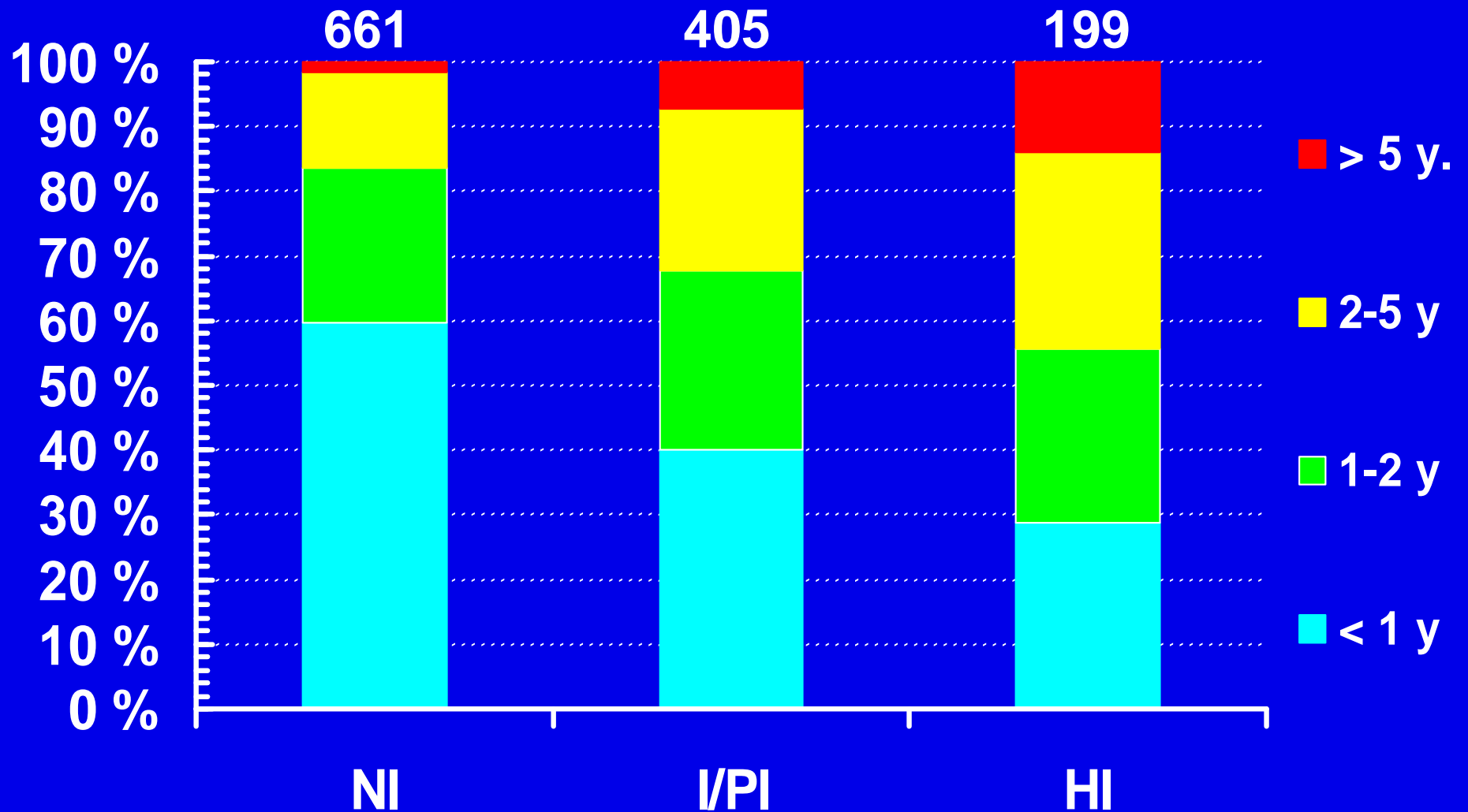
## By STAMP & DSA-status 2009-2012





# Waiting time and immunization

## Patients on waiting list by 21. Jan 2013



# Success?

---

É Pos. Xm: Initially too many, now satisfactory.

É Centre compliance: Acceptable

É Obtained tx: Acceptable ó 41 STAMP vs 7 Prio 1

É Posttx GS: acceptable; > 90% 1 y GS

É Posttx rejections: acceptable; ~20%

É **Not all can be helped by STAMP**

É **Not all that can be helped by STAMP**

**are on STAMP!**