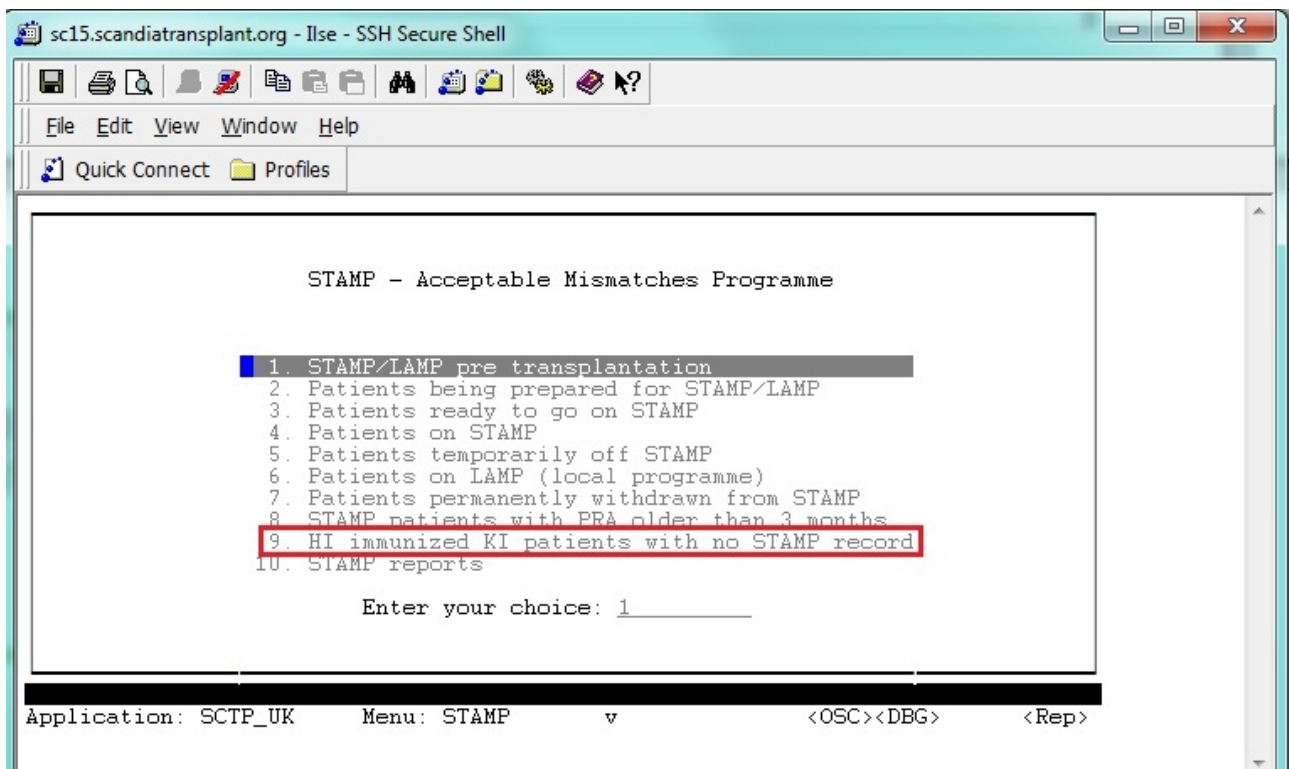


New menu to help finding highly immunised patients that might be relevant for STAMP

A new entry to the STAMP menu have been added in the database 'HI immunized KI patients with no STAMP record'. The menu displays kidney patients which are highly immunised, whom have been waiting for a kidney for more than 1 year (except children) and do not already have a STAMP record.

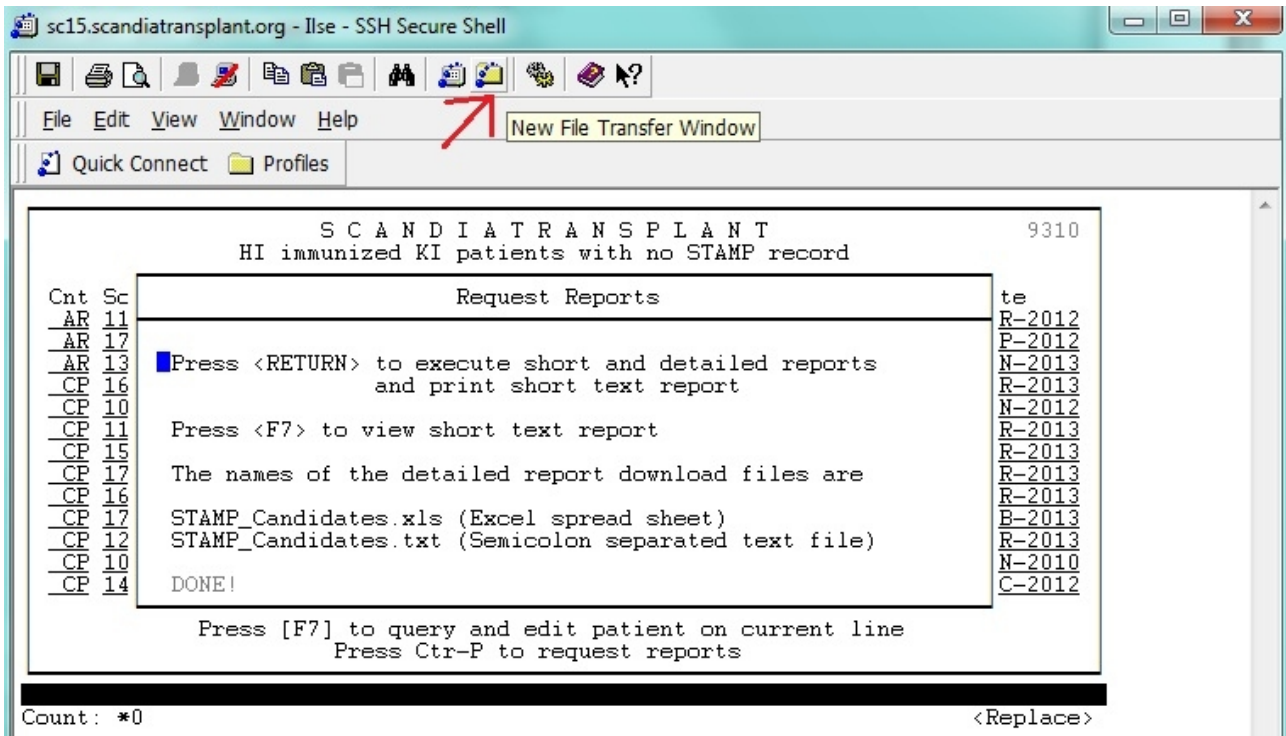


When you enter the menu you get an overview of all recipients fulfilling the mentioned criteria. If you wish to have data extracted on the recipients from you own center you start by pressing ctrl-P, then you can choose to:

- Press <enter> to execute a short printout report or
- Press <F7> to view the short text report on screen

When you create a short report you will automatically at the same time also create a longer detailed report as a spreadsheet.

The spreadsheet you can find by clicking on the 'New file Transfer Window'



The name of the detailed report download file is STAMP_Candidates

