



## News from Scandiatransplant office

June 2018

### Introduction

#### Headlines

---

*Database update  
June 6, 2018*

---

- Change in pancreas rotation list
- Relocation of 'Waiting list' overview in 'All recipients'
- HLA antibody data, Fusion -> YASWA
- Liver - calculated ischemia time
- Follow up on Scandiatransplant quiz

All previous newsletters can be found on the Scandiatransplant web page

<http://www.scandiatransplant.org/news/newsletters>

#### Content

- 1 Introduction and purpose
- 2 Change in pancreas rotation list
- 2 Relocation of waiting list overview in 'All recipients'
- 3 HLA antibody data, Fusion -> YASWA
- 3 Liver – Calculated ischemia time
- 4 Follow up on Scandiatransplant quiz

### Purpose

By this information letter, we wish to communicate to you about status and progress related to the database, collaboration with groups related to Scandiatransplant and on-going working projects.

We hope that you will read it and share the information with whom it might concern.

Do not hesitate to contact us for further information, ideas, problems and help.

Scandiatransplant  
Aarhus Universitetshospital, Skejby  
8200 Aarhus N  
Denmark

[www.scandiatransplant.org](http://www.scandiatransplant.org)

## Change in pancreas rotation list

At the last Nordic Pancreas and Islet Group meeting, held April 10th 2018, it was decided that each country should only have one entry on the pancreas rotation list.

Minutes from meeting

[http://www.scandiatransplant.org/members/nordic-pancreas-group/NTG\\_Minutes\\_2018\\_april.pdf](http://www.scandiatransplant.org/members/nordic-pancreas-group/NTG_Minutes_2018_april.pdf)

This change has been effectuated in YASWA today, meaning that the 4 Swedish pancreas transplant centres only have one common entry on the rotation list and furthermore Estonia/Tartu has now been included on the list.

Updated recommendations

[http://www.scandiatransplant.org/organ-allocation/NTG\\_exchange\\_recommendations\\_150522.pdf](http://www.scandiatransplant.org/organ-allocation/NTG_exchange_recommendations_150522.pdf)

---

**Effective  
June 6th 2018  
Each country - one  
entry on pancreas  
rotation list**

---

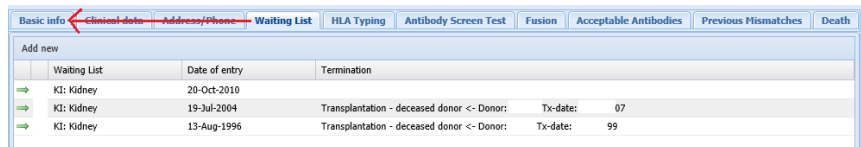
## Relocation of 'Waiting list' overview in 'All recipients'

Historical and current waiting list entries have been relocated from the previous 'Waiting list' tab

---

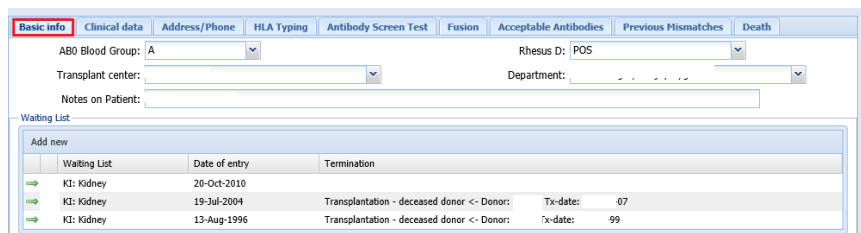
**Relocation of waiting  
list information**

---



Waiting List	Date of entry	Termination
KI: Kidney	20-Oct-2010	
KI: Kidney	19-Jul-2004	Transplantation - deceased donor <- Donor: Tx-date: 07
KI: Kidney	13-Aug-1996	Transplantation - deceased donor <- Donor: Tx-date: 99

to the first 'Basic info.' tab.



Waiting List	Date of entry	Termination
KI: Kidney	20-Oct-2010	
KI: Kidney	19-Jul-2004	Transplantation - deceased donor <- Donor: Tx-date: 07
KI: Kidney	13-Aug-1996	Transplantation - deceased donor <- Donor: Tx-date: 99

## HLA antibody data, Fusion -> YASWA

---

### *Introducing import of data from Luminex Fusion software*

---

An application for direct import of antibody screen-test data from local Fusion-software to YASWA is now launched. The upload can be used for 'Luminex mixed assay' and 'Luminex single antigen bead assay'. For the latter, antibody specificities concluded in final assignment + MFI values will be transferred.

---

### *Installation of application*

---

To start with you need to install and setup the application, this is a onetime procedure which might require help from local it staff.

Installation of the application must be done on a computer with access both to the internet and Fusion database. Furthermore 'Microsoft SQL Server Management Studio' and a database login is required.

Instructions for installation and setup is found here:  
<http://www.scandiatransplant.org/organ-allocation/FusiontoYASWAsoftware.pdf>

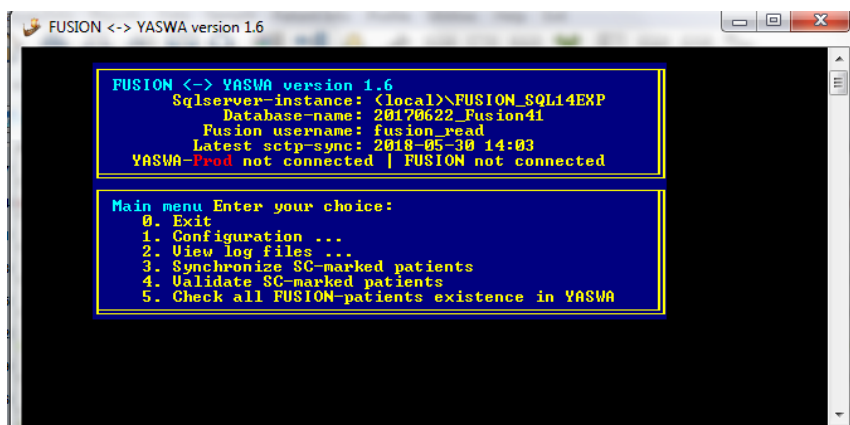
When installation is in place you are ready to tryout the application, it is default set to run against the test server:  
<https://sc40.scandiatransplant.org/sctpTest/>.  
If/when you wish to change this you need to change it in the configuration menu.

---

### *Using the application*

---

A short manual is found here:  
<http://www.scandiatransplant.org/organ-allocation/Routinelyuploadofantibodyscreen.pdf>



When you decide to start to run against production, please check that results are transferred correct both in log file but also by looking directly in YASWA.

When you import antibody specificities from final assignment in Fusion a combined class I + II PRA is calculated (based on the Scandiatransplant donor pool of 2000 donors) and inserted automatically in YASWA. The value is inserted in the class I PRA field and can if desired be overwritten with own local PRA.

We have tested various setups, however local settings etc. might differ, so please check data transfer meticulous especially in the beginning.

If you come across errors please don't hesitate to contact the office.

---

**Insertion of  
calculated combined  
PRA**

---



---

**Feedback to the  
office**

---



---

**Liver registry – Form B  
calculated  
ischemia time**

---

## Liver – calculated ischemia time

In liver registry Form B total ischemia time is now automatically calculated if 'Tx date, time' and 'Preservation started date, time' have been registered.

Basic	Simultaneous transplantation	Laboratory test	Pre & post-pathology	Operation	NLTR Donor information	SCTP Donor information	Early post-op.
Whole/part/split liver (NLTR): <input type="text"/>							
Segments used (NLTR): <input type="text"/>							
Whole/part/split liver (SCTP): W: Whole liver <input type="text"/>							
Partial liver/size reduction: <input type="text"/>							
Segments used (SCTP): <input type="text"/>							
Graft weight: <input type="text"/> g							
Microvesicular steatosis: 2: mild (<30%) <input type="text"/>							
Macrovesicular steatosis: 2: mild (<30%) <input type="text"/>							
Overall steatosis: 2: mild (<30%) <input type="text"/>							
Donation after circ. death: N: No <input type="text"/>							
Cold ischemia time (DBD/DCD): 10 hours 4 minutes							
Functional warm ischemia time (DCD): <input type="text"/> hours <input type="text"/> minutes							
Calculated ischemia time: 10 hours 4 minutes							
Biliary anastomosis: CC: Chol-cholestomy <input type="text"/>							
By pass: 1: Extracorporeal by pass <input type="text"/>							
Arterial reconstruction: <input type="text"/>							
Piggy back: <input type="text"/>							

## Follow up on Scandiatransplant quiz

The quiz below was available at the Scandiatransplant booth at STS in Oslo, 2<sup>nd</sup>-4<sup>th</sup> of May 2018, we hereby reveal the correct answers (marked with X). The winner was drawn random among the participants with most correct answers. We congratulate the winner, Ingebjørg Kvangarsnes, transplant coordinator in Oslo.

In what year does Scandiatransplant celebrate its 50-years jubilee?		
<input checked="" type="radio"/> 2019	<input type="radio"/> 2021	<input type="radio"/> 2023
When was the first module launched in YASWA?		
<input checked="" type="radio"/> 2010	<input type="radio"/> 2012	<input type="radio"/> 2014
Approx. how many persons have access to YASWA		
<input type="radio"/> 150	<input checked="" type="radio"/> 350	<input type="radio"/> 550
How many kidney exchange obligations exists in Scandiatransplant?		
<input type="radio"/> 3	<input type="radio"/> 4	<input checked="" type="radio"/> 5
How many organ types have a rotation list?		
<input type="radio"/> 3	<input checked="" type="radio"/> 4	<input type="radio"/> 5
Number of persons working at the Scandiatransplant office		
<input type="radio"/> 7	<input type="radio"/> 8	<input checked="" type="radio"/> 9
YASWA is an abbreviation for		
<input checked="" type="radio"/> Yet Another Scandiatransplant Web Application	<input type="radio"/> Yes, Apply Scandiatransplant Web Application	<input type="radio"/> Your Anonymous Secure Web Application
This is <i>not</i> a (recognized) HLA antigen		
<input checked="" type="radio"/> A7	<input type="radio"/> A11	<input type="radio"/> A26
How many transplant hospitals are members of Scandiatransplant?		
<input type="radio"/> 10	<input checked="" type="radio"/> 11	<input type="radio"/> 12
In what year was Tartu accepted as an associate member of Scandiatransplant?		
<input type="radio"/> 2015	<input type="radio"/> 2016	<input checked="" type="radio"/> 2017
Scandiatransplant covers a population of approx.		
<input type="radio"/> 22,3 million	<input checked="" type="radio"/> 28,4 million	<input type="radio"/> 31,5 million