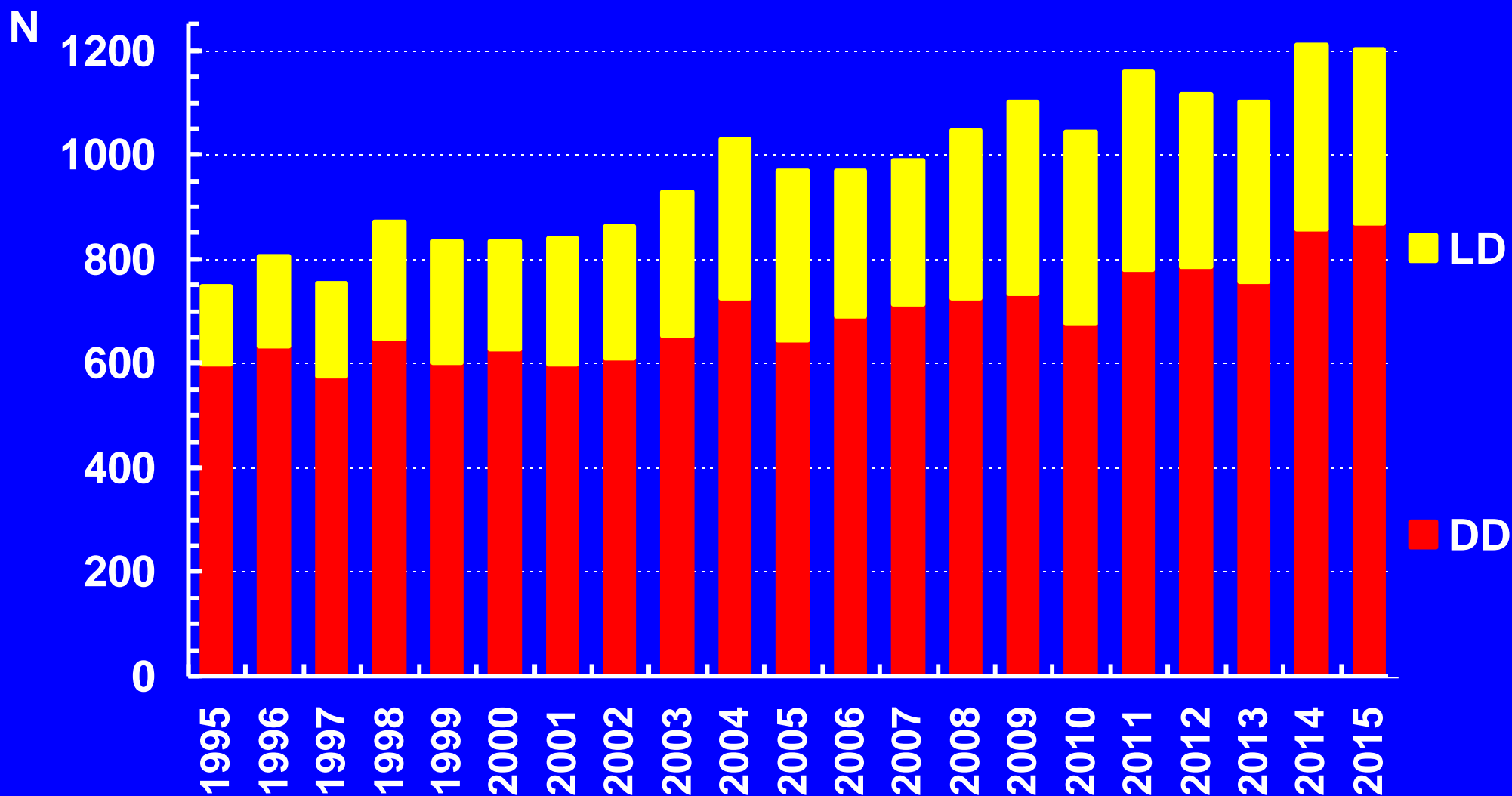


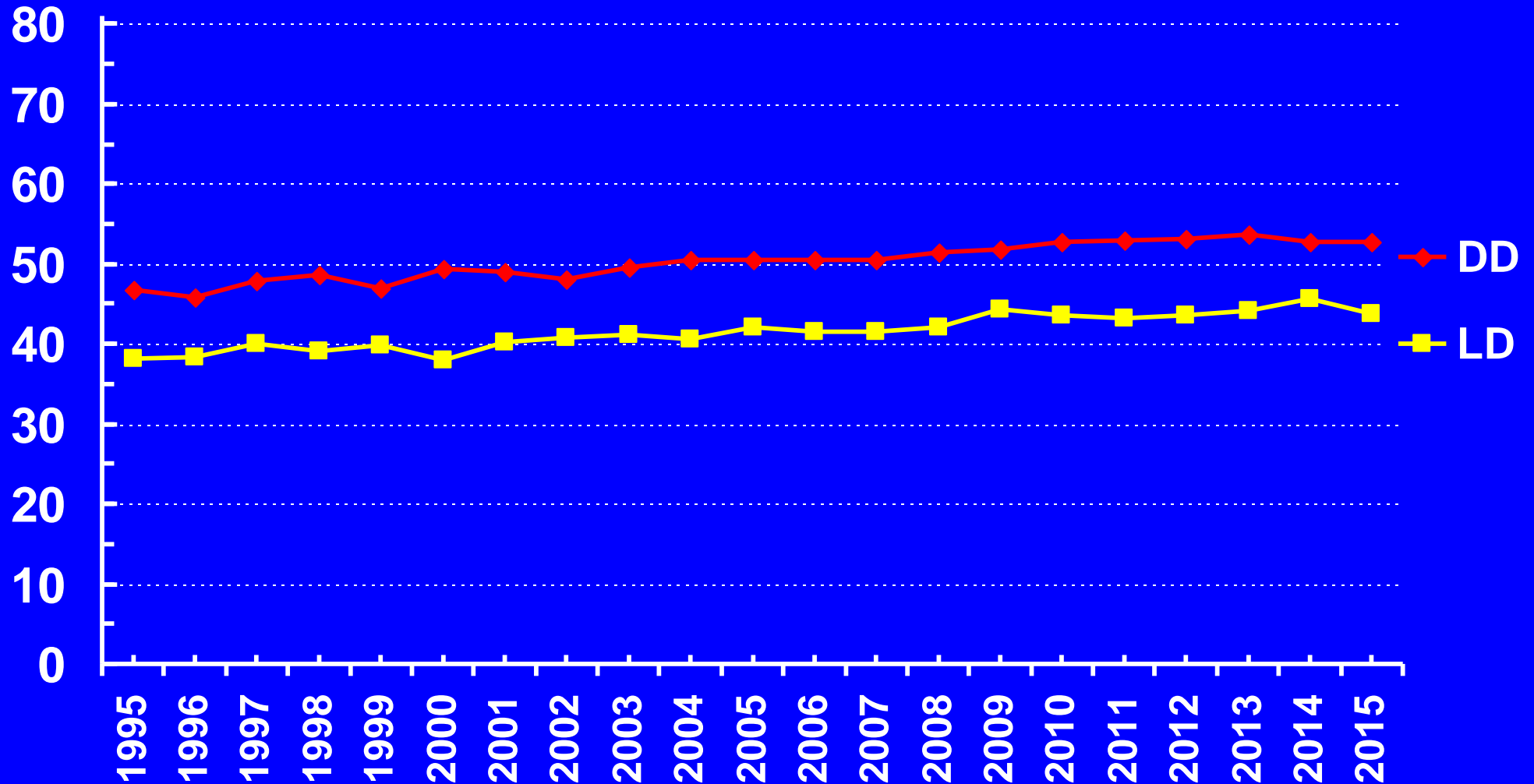
Renal transplants in ScandiTransplant

By donor source & transplant year, 1995 - 2015



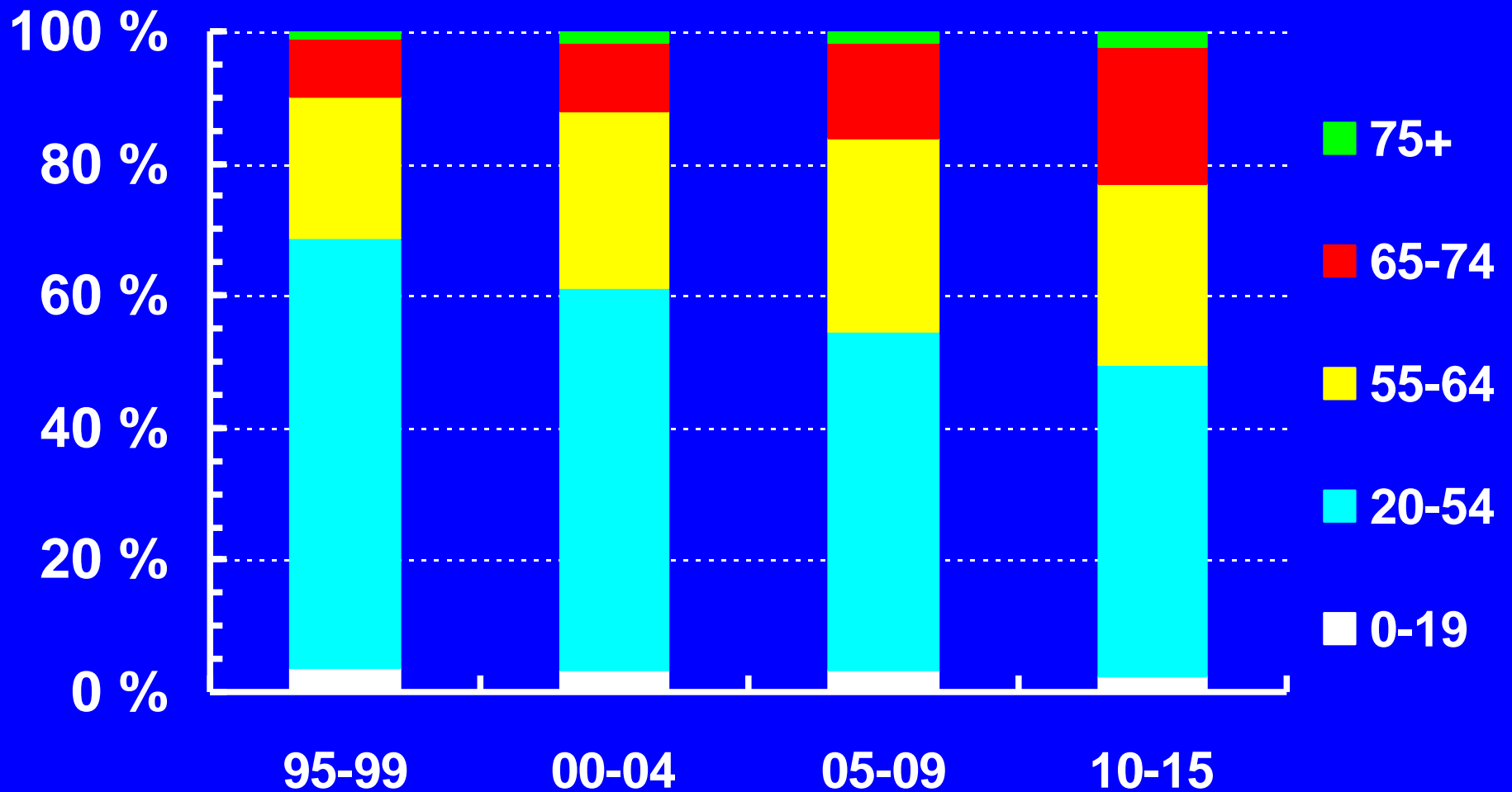
Recipient mean age in Scandiatriplant

By donor source & transplant year, 1995 - 2015



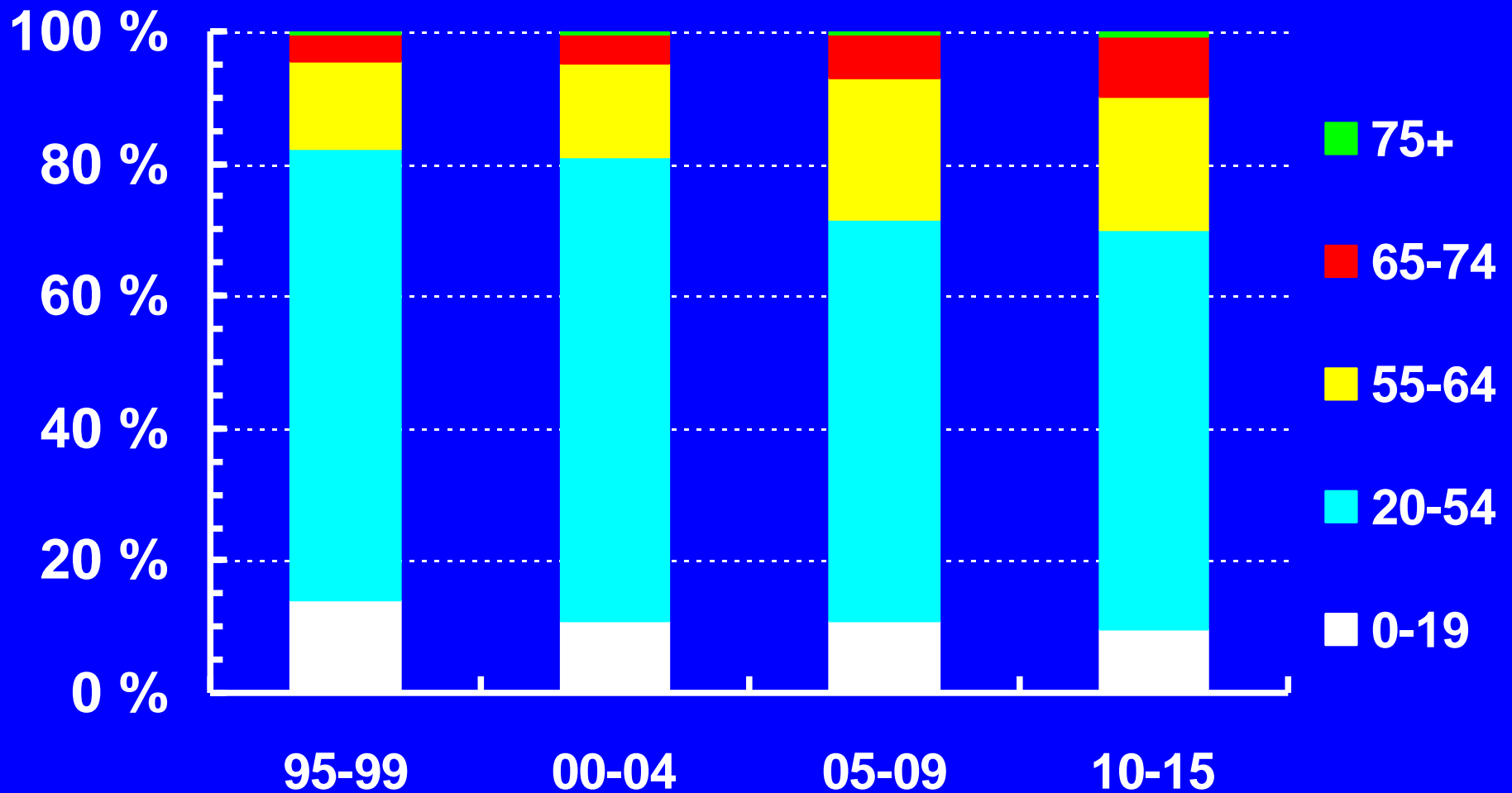
Deceased donor renal transplants

by recipient age strata. Scandiatriplant 1995-2015



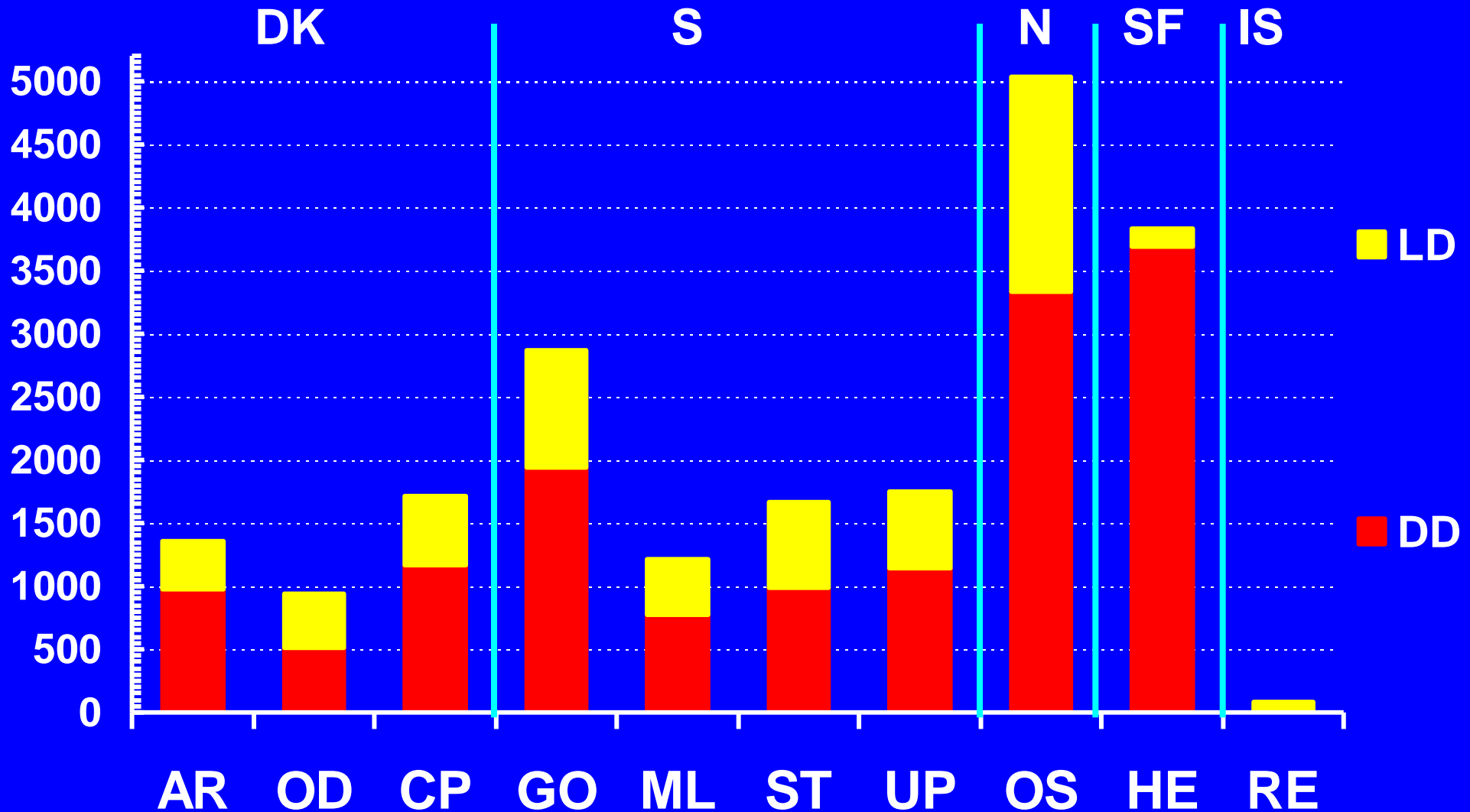
Living donor renal transplants

by recipient age strata. Scandiatriplant 1995-2015



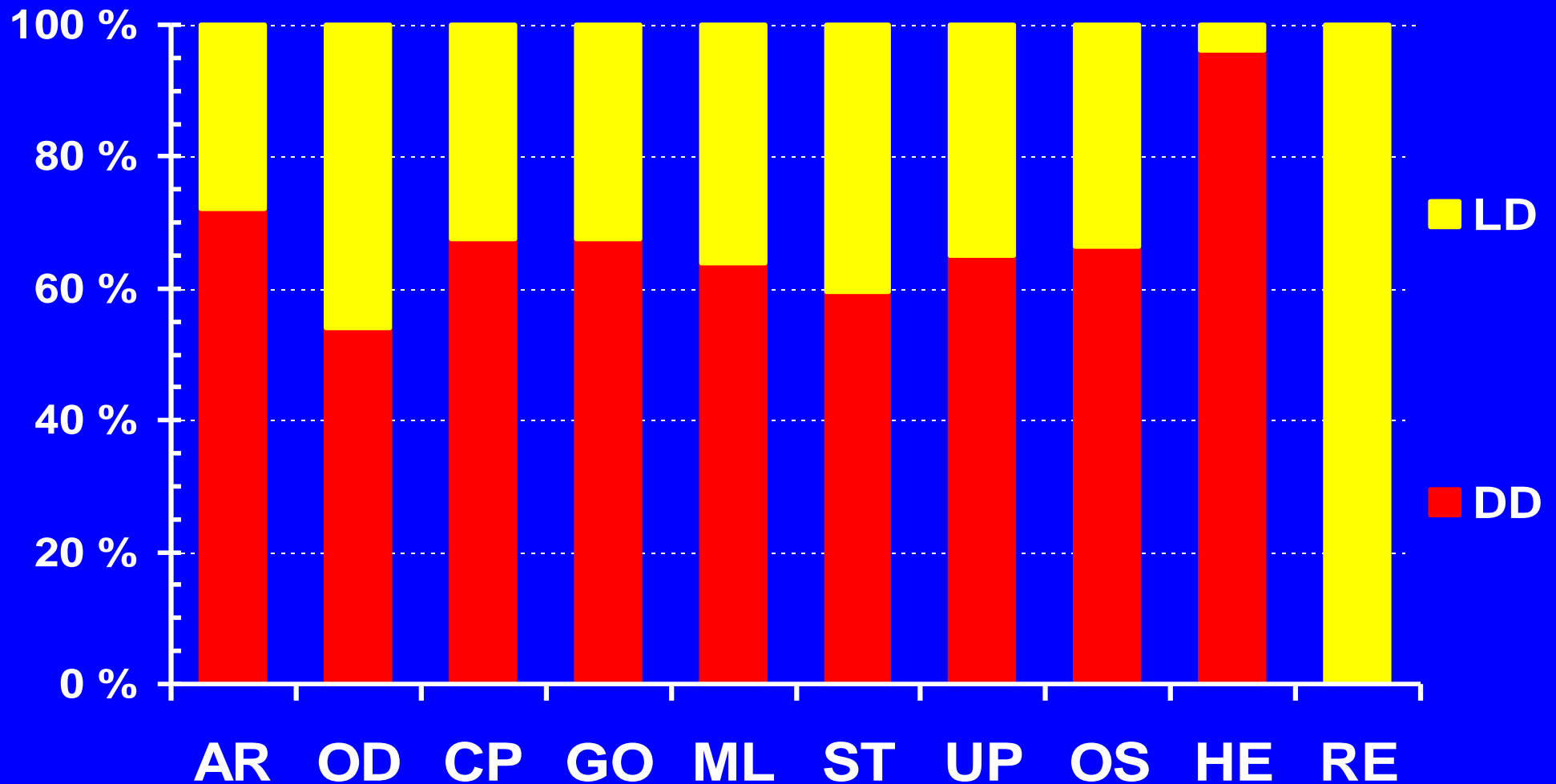
LD and DD renal transplants

By Scandiatriansplant centre, 1995 - 2015



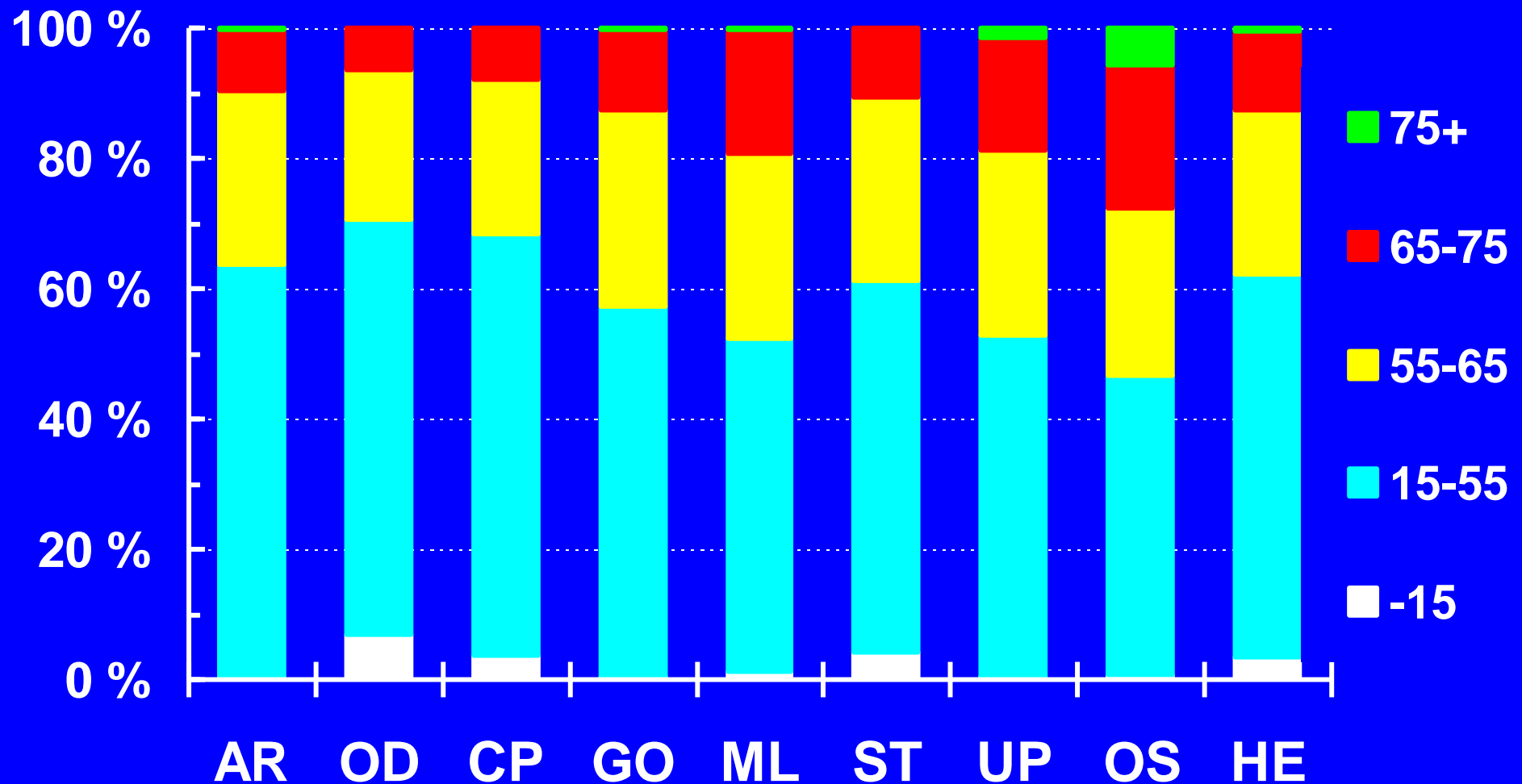
LD and DD renal transplants

By Scandiatriansplant centre, 1995 - 2015



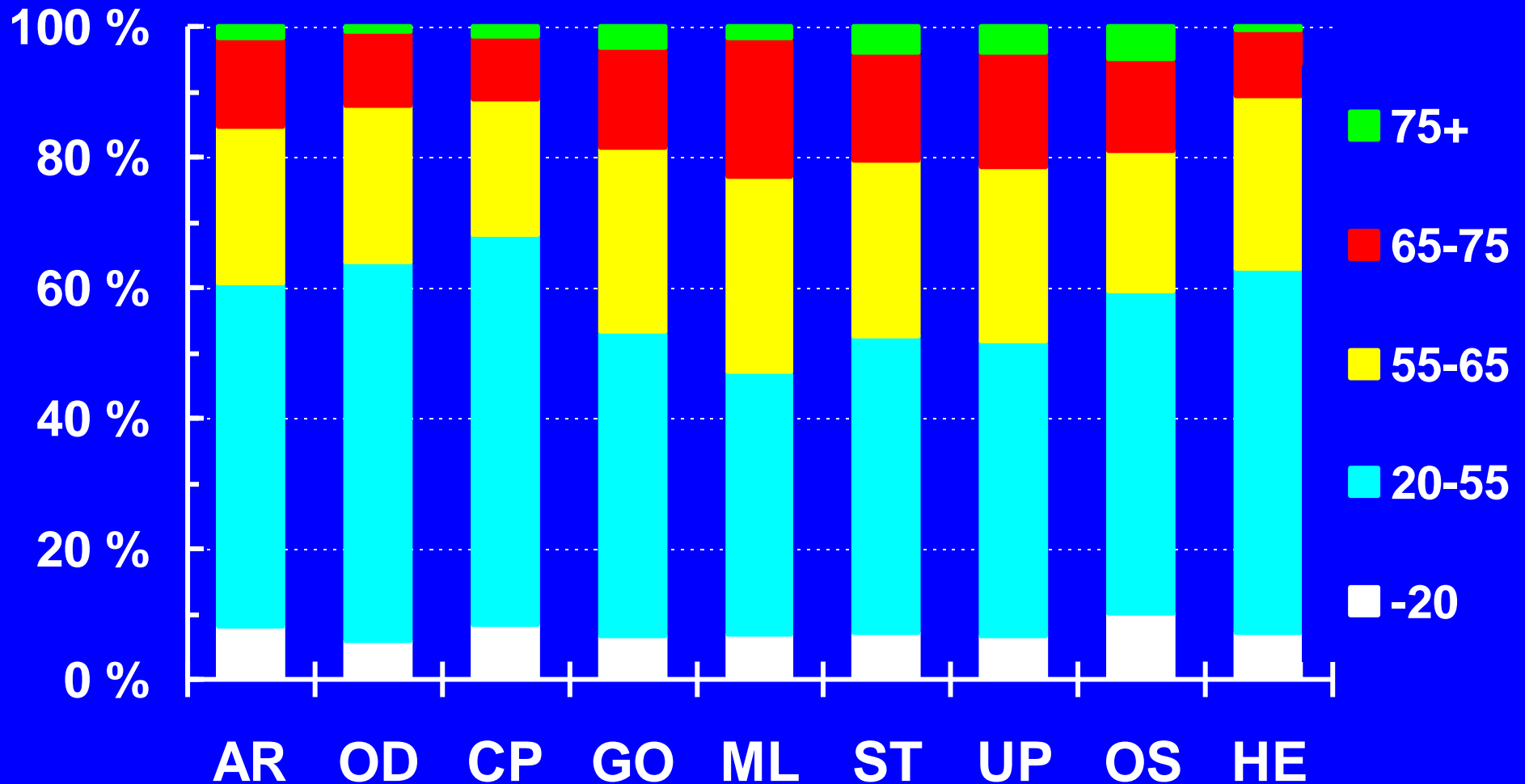
DD-graft recipient age groups

By Scandiatriansplant centre, 1995-2015



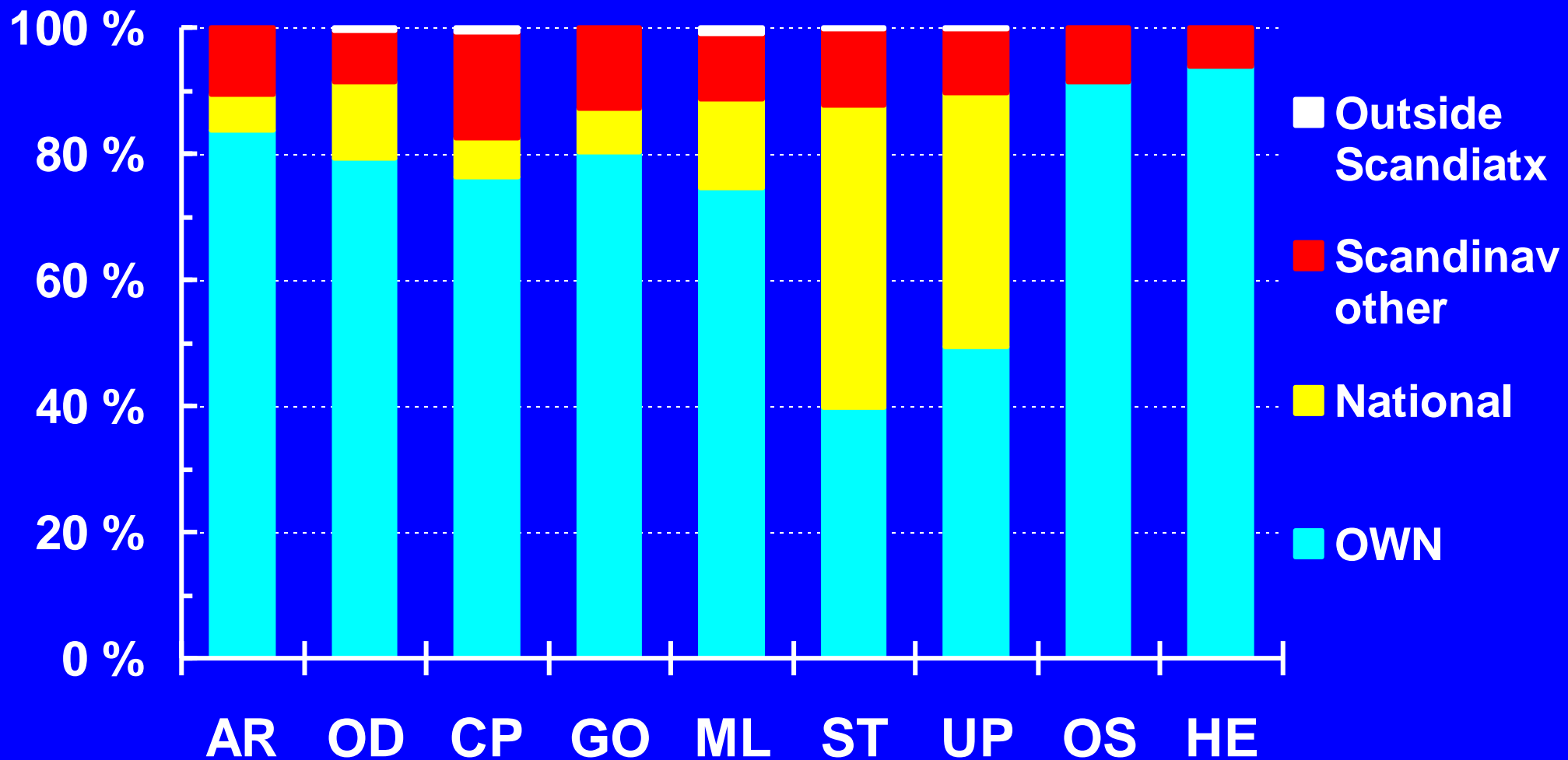
Age of DD-renal grafts

By Scandiatri transplant centre, 1995-2015



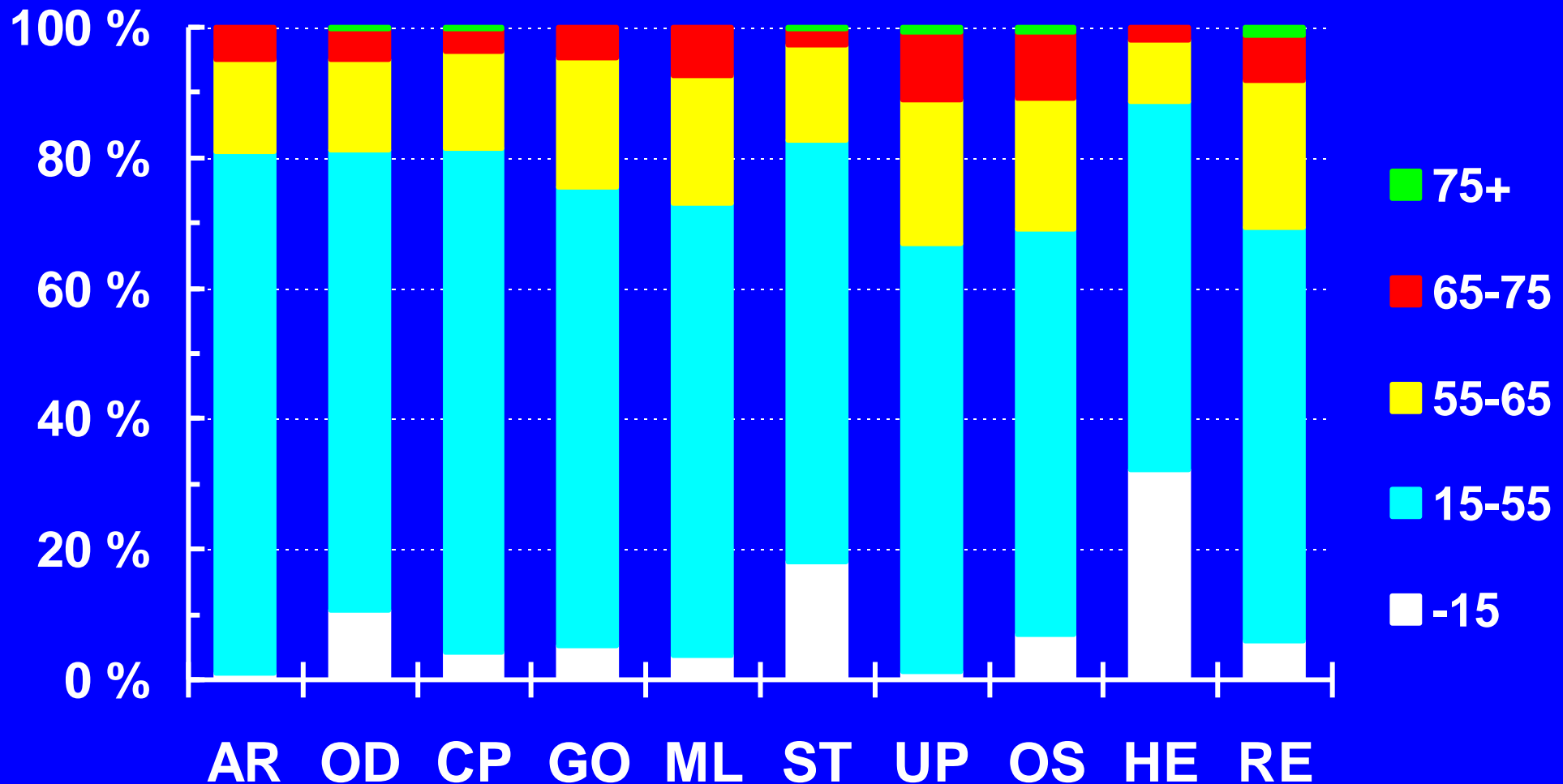
Origin of DD-renal grafts

By Scandiatriansplant centre, 1995-2015



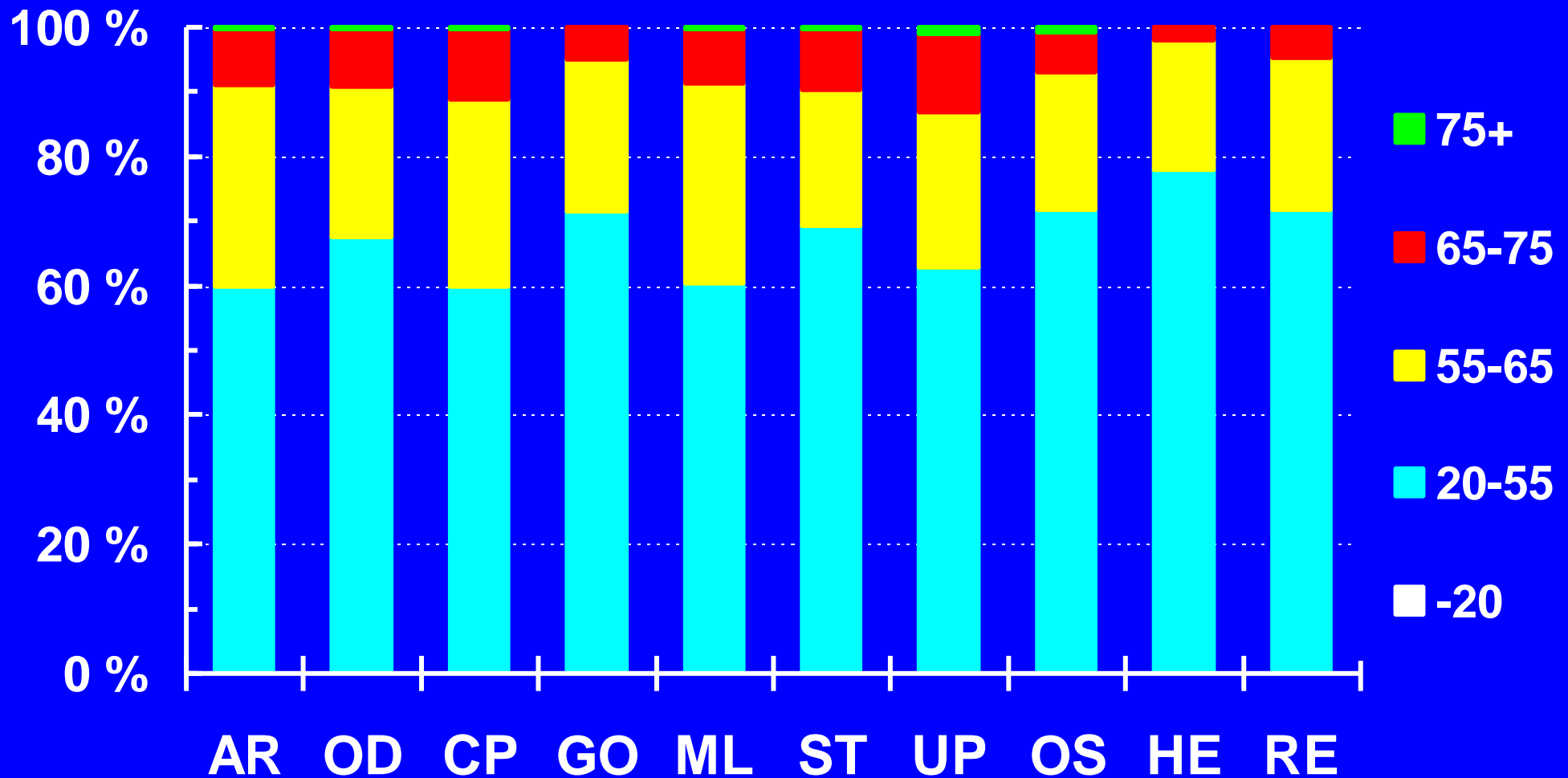
LD-graft recipient age groups

By Scandiatriansplant centre, 1995-2015



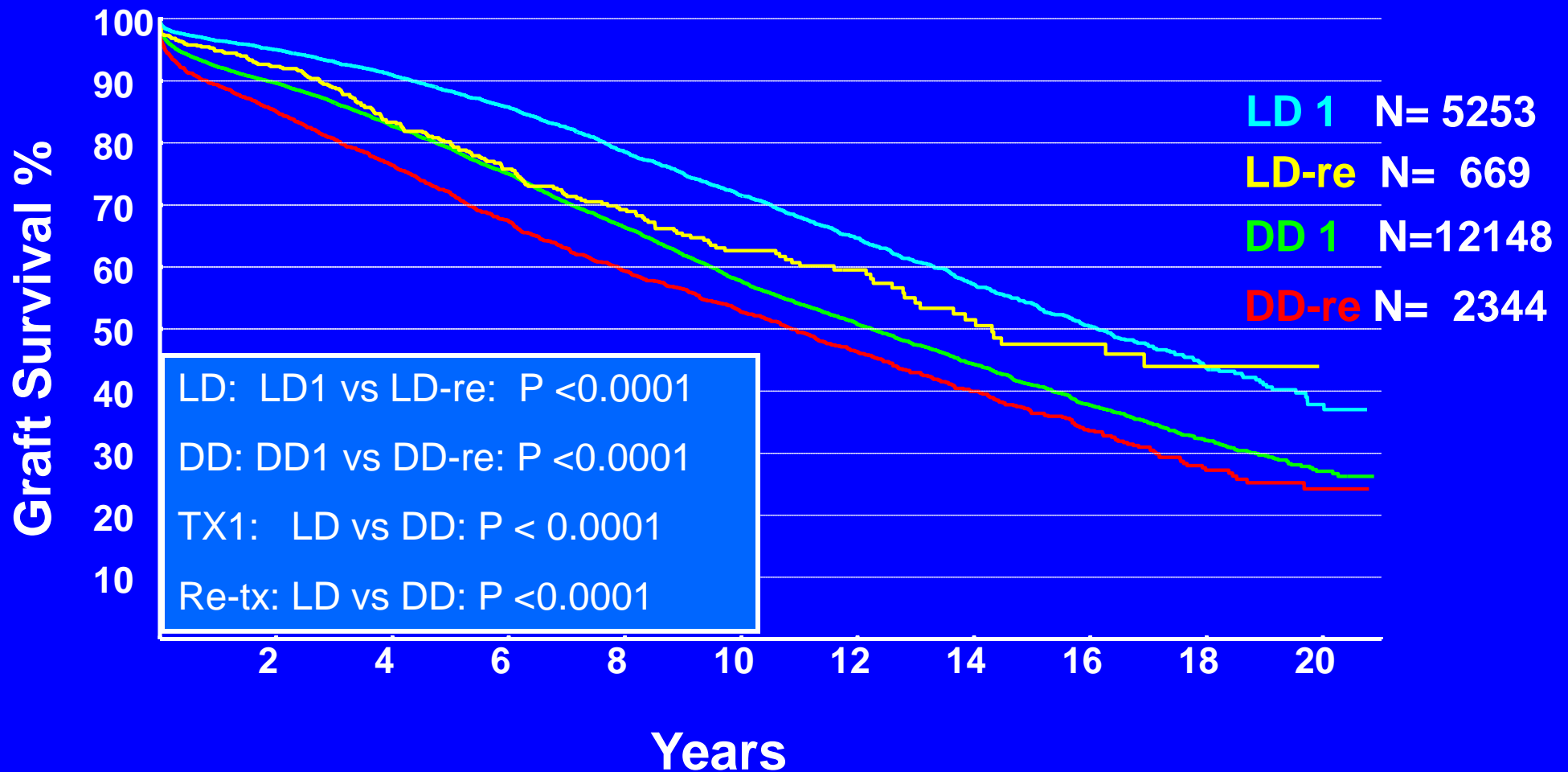
Age of LD-renal grafts

By Scandiatriplant centre, 1995-2015



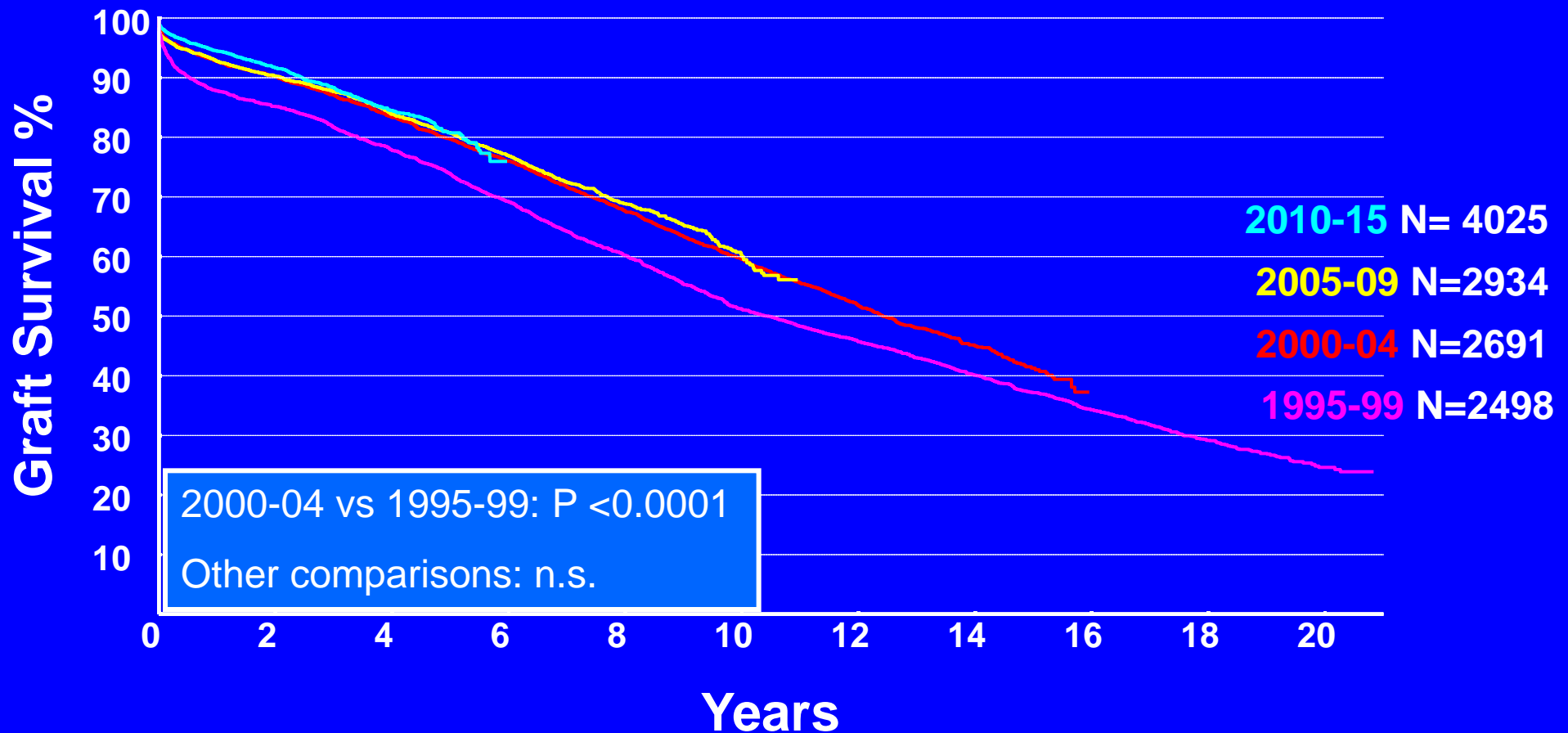
Survival of renal first & later grafts.

By donor source. Scandiatriansplant 1995-2015



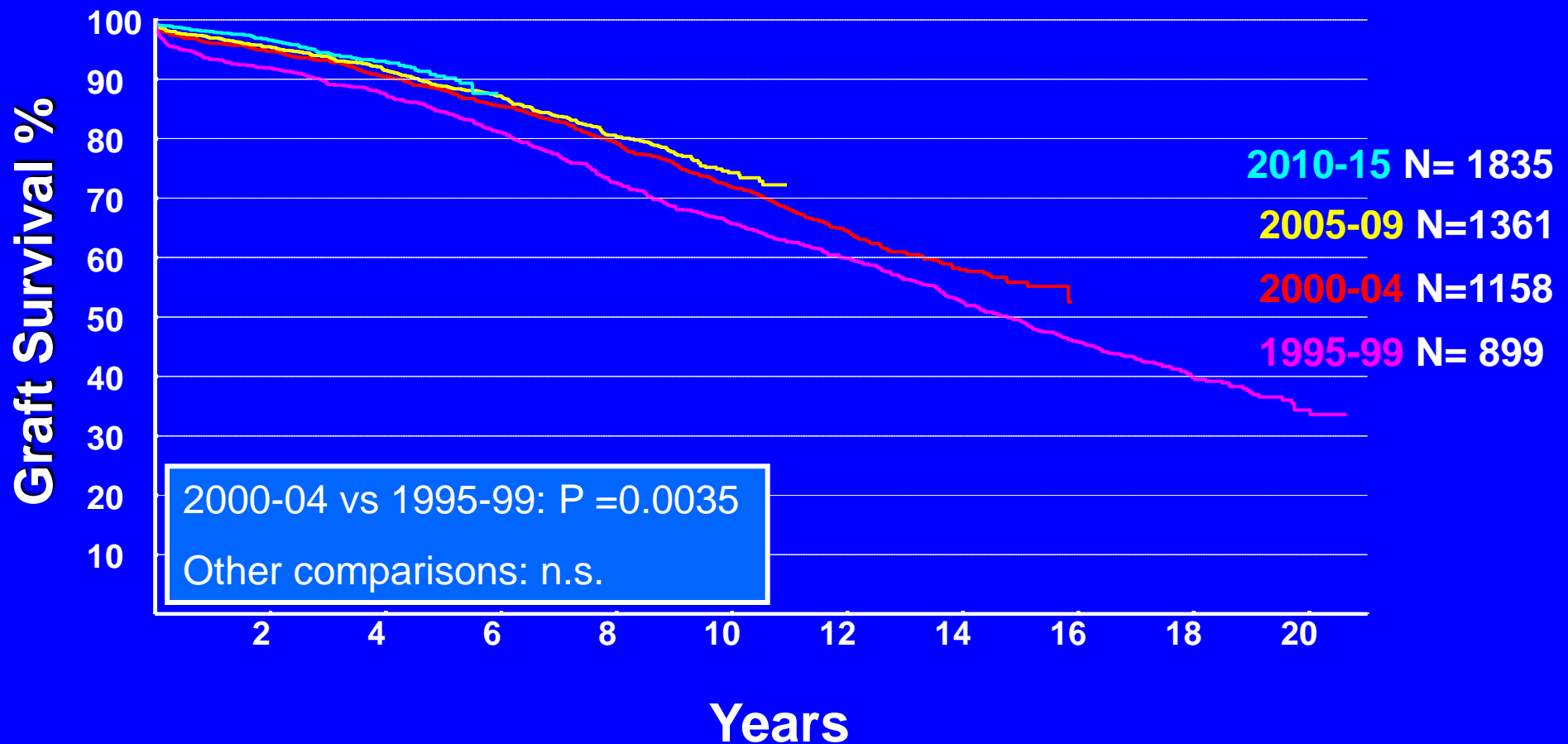
Survival of first renal DD grafts

By period. Scandiatriplant 1995-2015



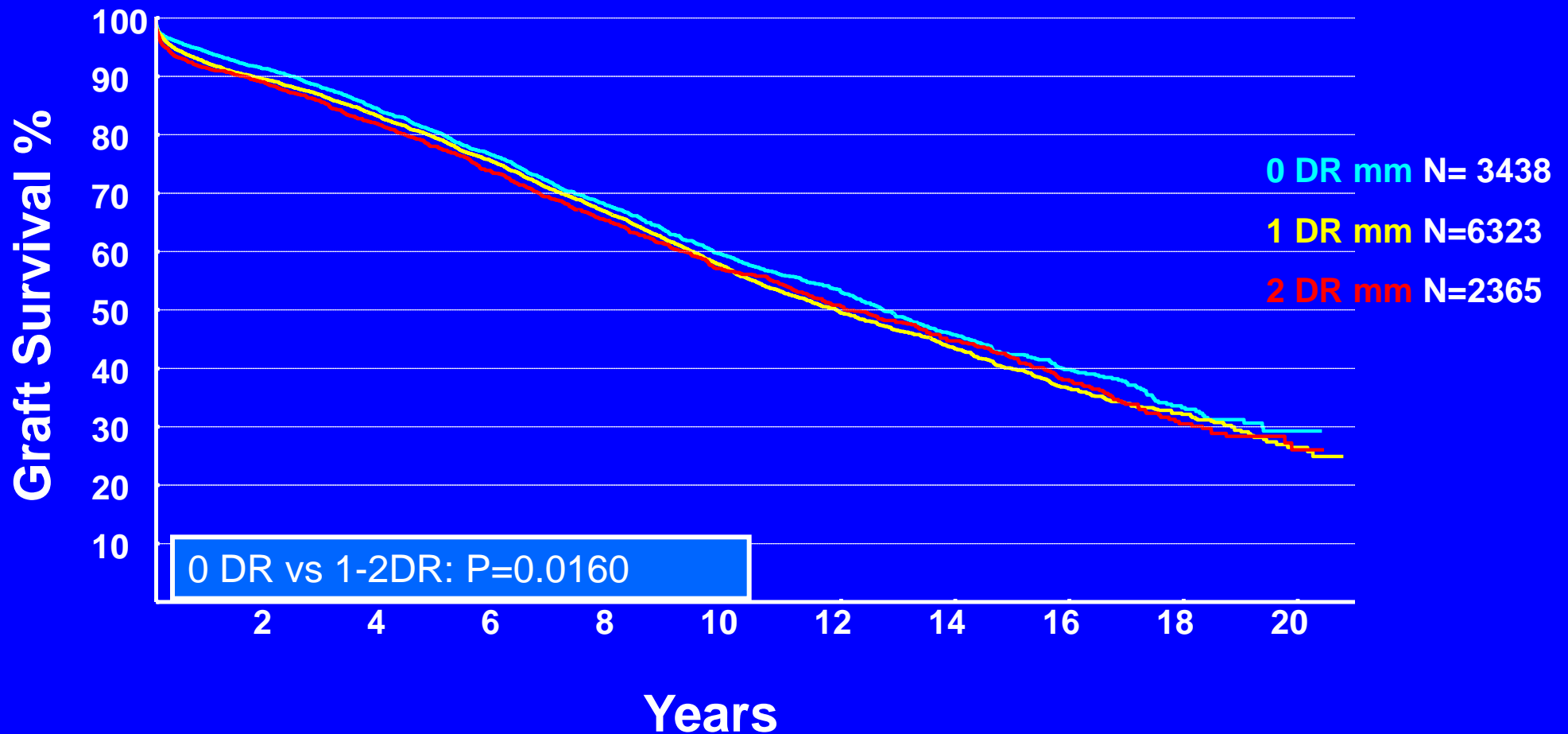
Survival of first renal LD grafts

By period. Scandiatriansplant 1995-2015



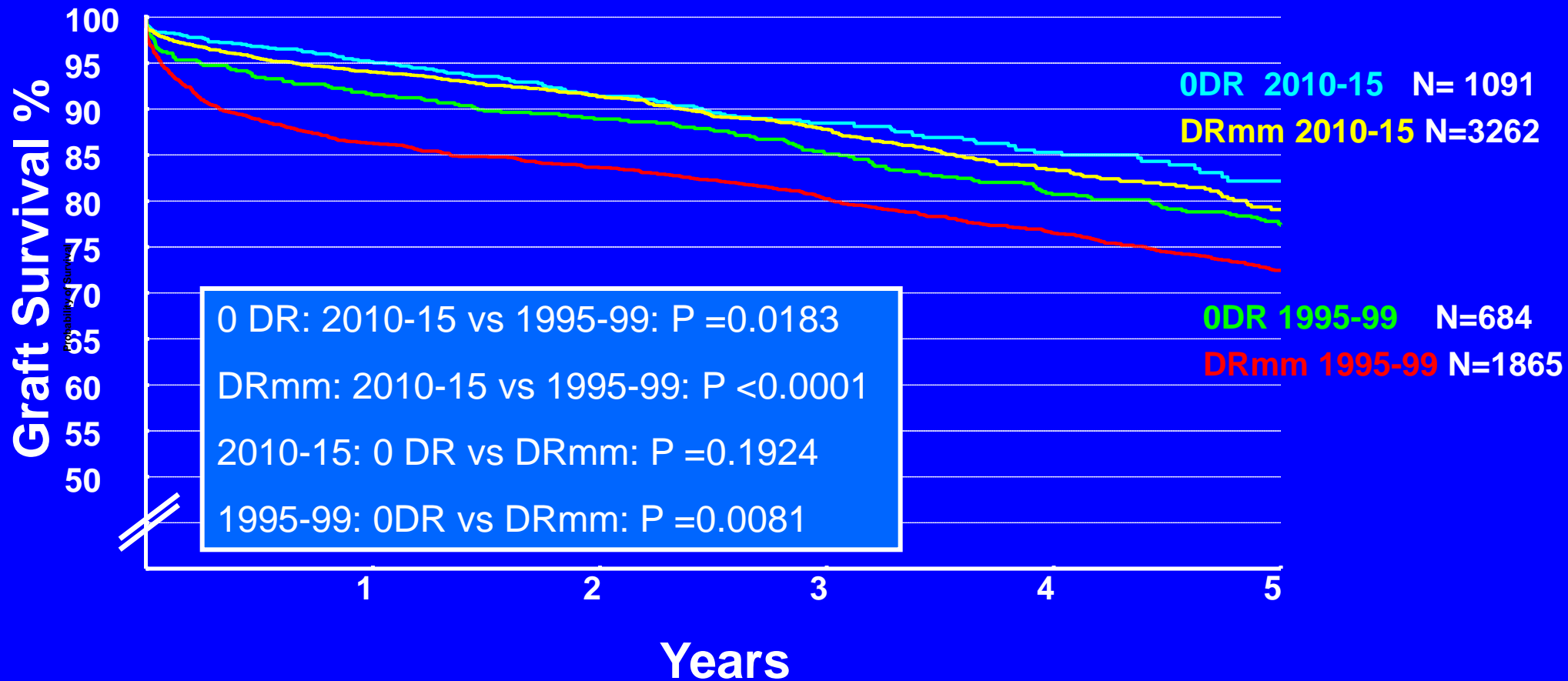
Survival of first renal DD grafts.

By DR mismatch. Scandiatriplant 1995-2015



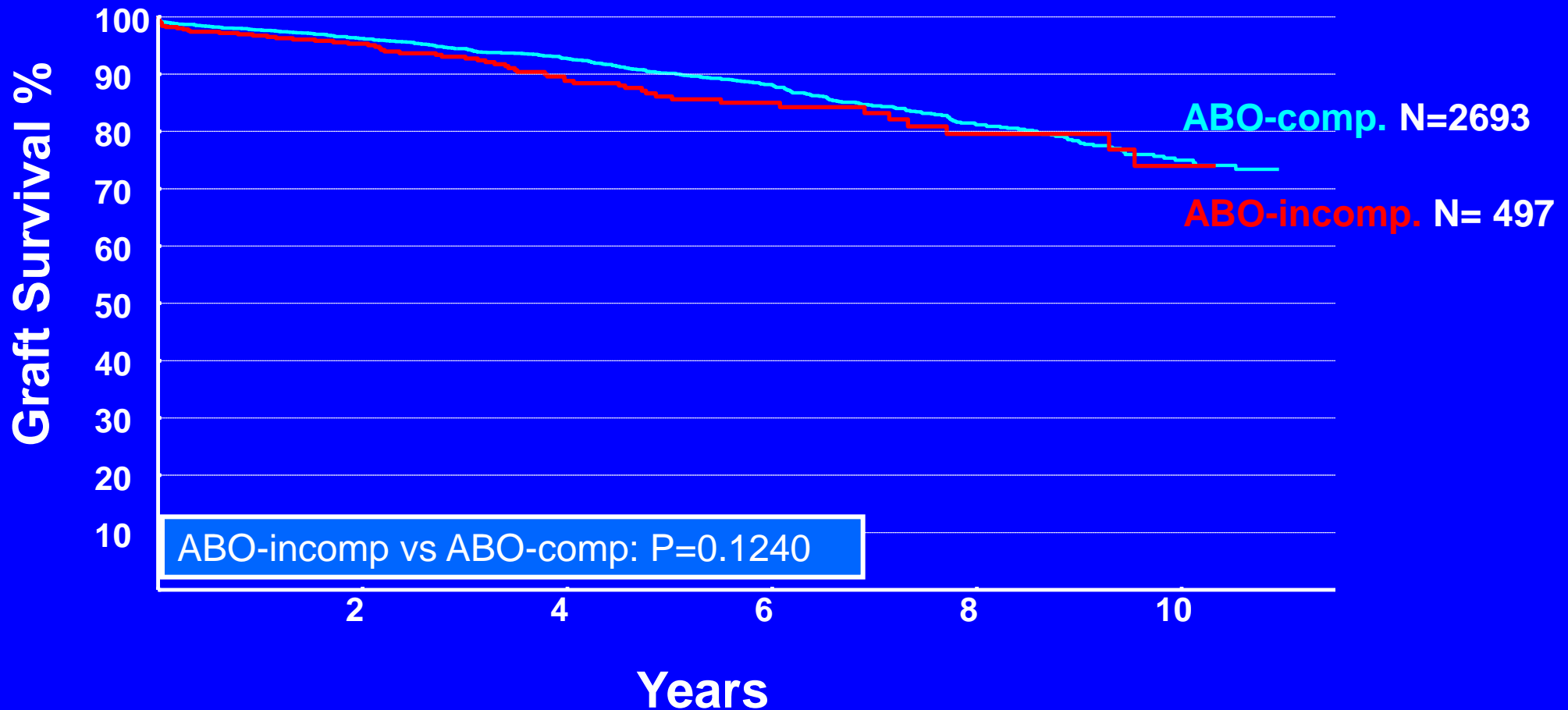
Survival of first renal DD grafts.

By DR match & period: 1995-99 vs. 2010-15



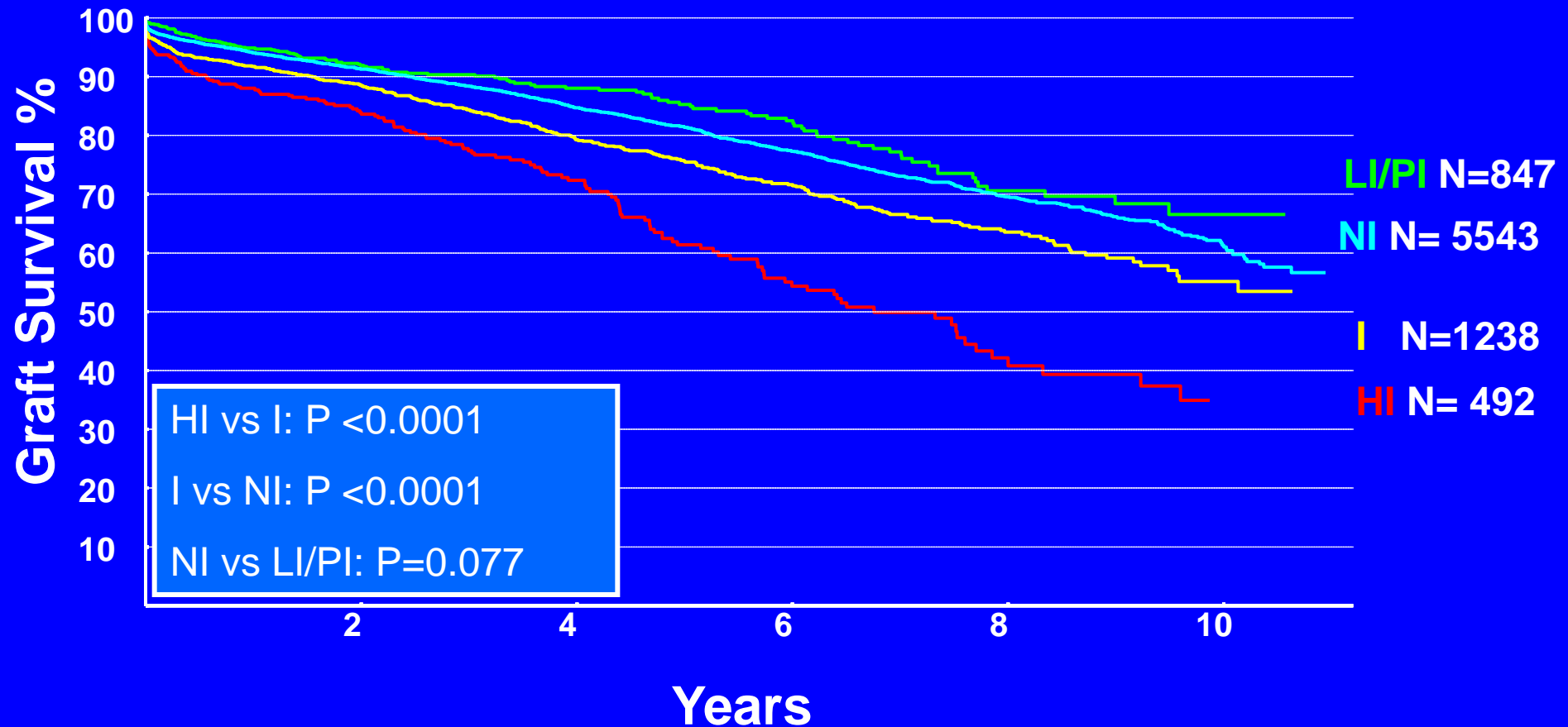
Survival of first renal LD grafts.

ABO-comp. vs ABO-incomp. Scandiatax 2005-15



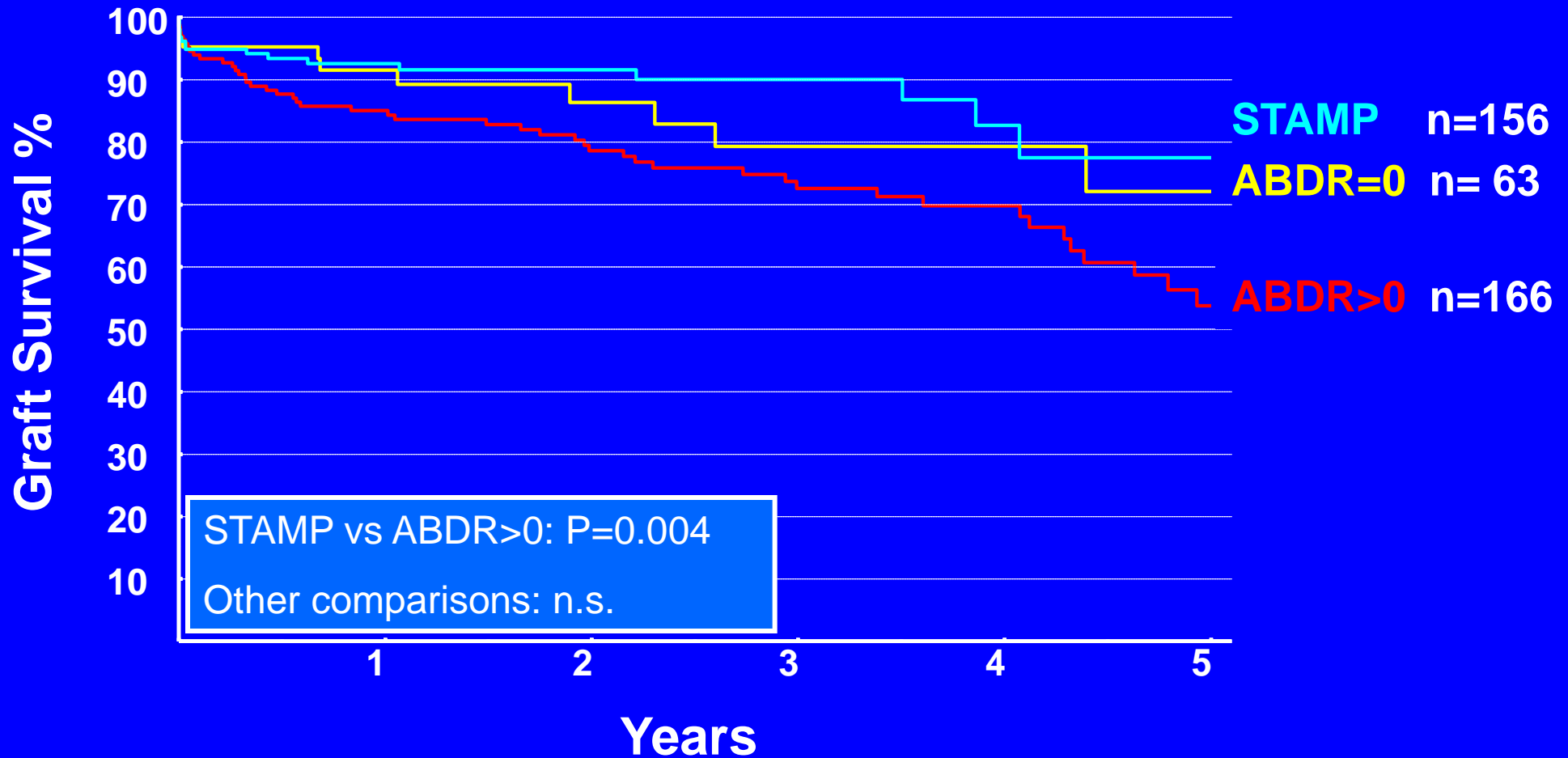
Survival of renal DD grafts

By immunisation status. Scandiatax. 2005-15



Renal graft survival in HI-patients.

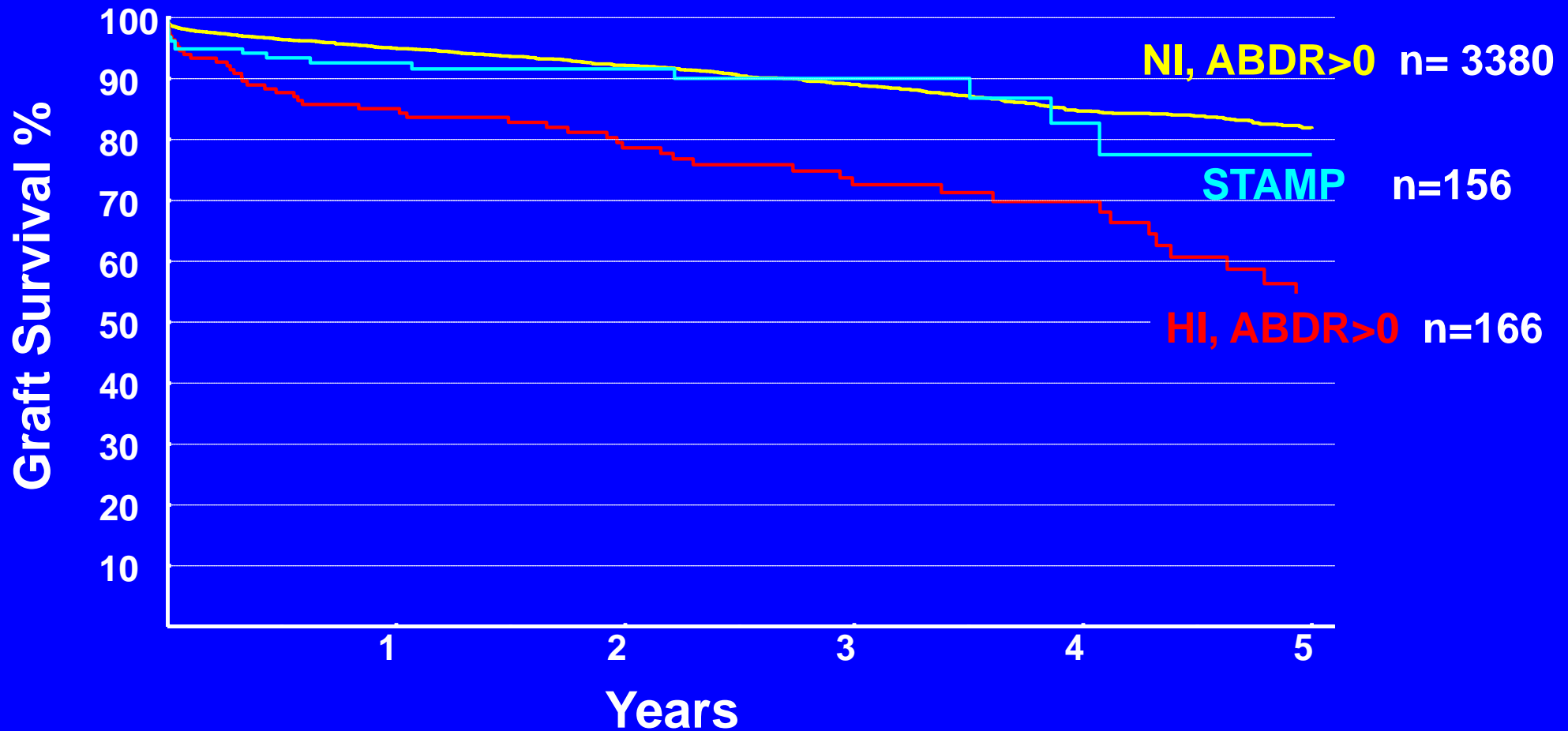
STAMP vs ABDRmatch; 2009 - 2015



Survival of renal DD grafts

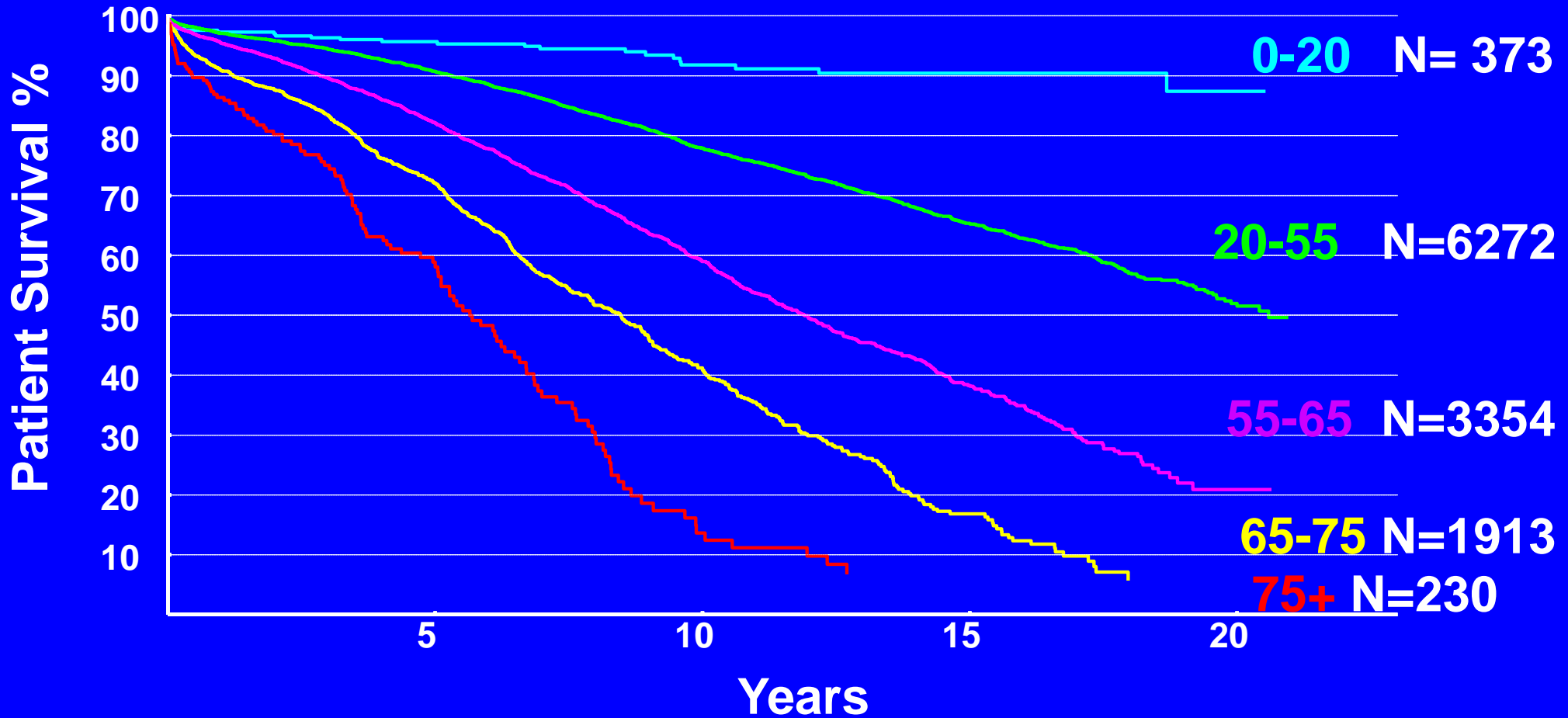
STAMP vs ABDR-mism. NI & HI recipients

Scandiatax. 2009-15



Patient survival after first renal DD-graft.

By age at tx1. Scandiatriansplant 1995-2015



Patient survival after first renal LD-graft.

By age at tx1. Scandiатransplant 1995-2015

