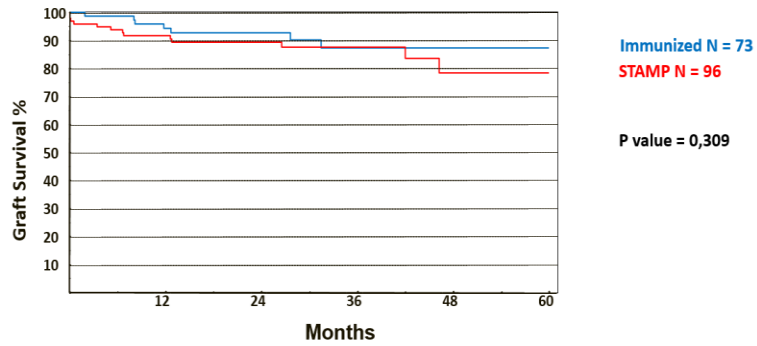


STAMP - status

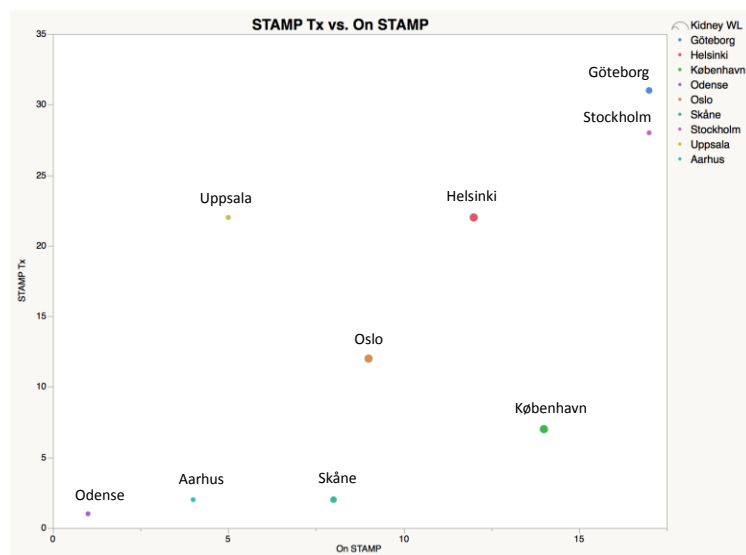
Graft survival



Transplantability score

Transplantability score	Number	Waiting time on STAMP in days/mean
$TS \geq 2.0$	22	37
$1.0 \leq TS < 2.0$	19	117
$0.2 < TS < 1.0$	26	174
$TS \leq 0.2$	29	205

STAMP Efficiency?



Center variation

STAMP 190916	Aarhus	København	Odense	Oslo	Helsinki	Skåne	Göteborg	Stockholm	Uppsala	Total
STAMP tx	2	7	1	12	22	2	31	28	22	127
On STAMP	4	14	1	9	12	8	17	17	5	87
Kidney w/ total	144	309	67	414	371	170	263	147	84	
STAMP% on WL	2,8%	4,5%	1,5%	2,2%	3,2%	4,7%	6,5%	11,6%	6,0%	
STAMP Tx per WL	1,4%	2,3%	1,5%	2,9%	5,9%	1,2%	11,8%	19,0%	26,2%	
STAMP Tx per STAMP WL	50,0%	50,0%	100,0%	133,3%	183,3%	25,0%	182,4%	164,7%	440,0%	