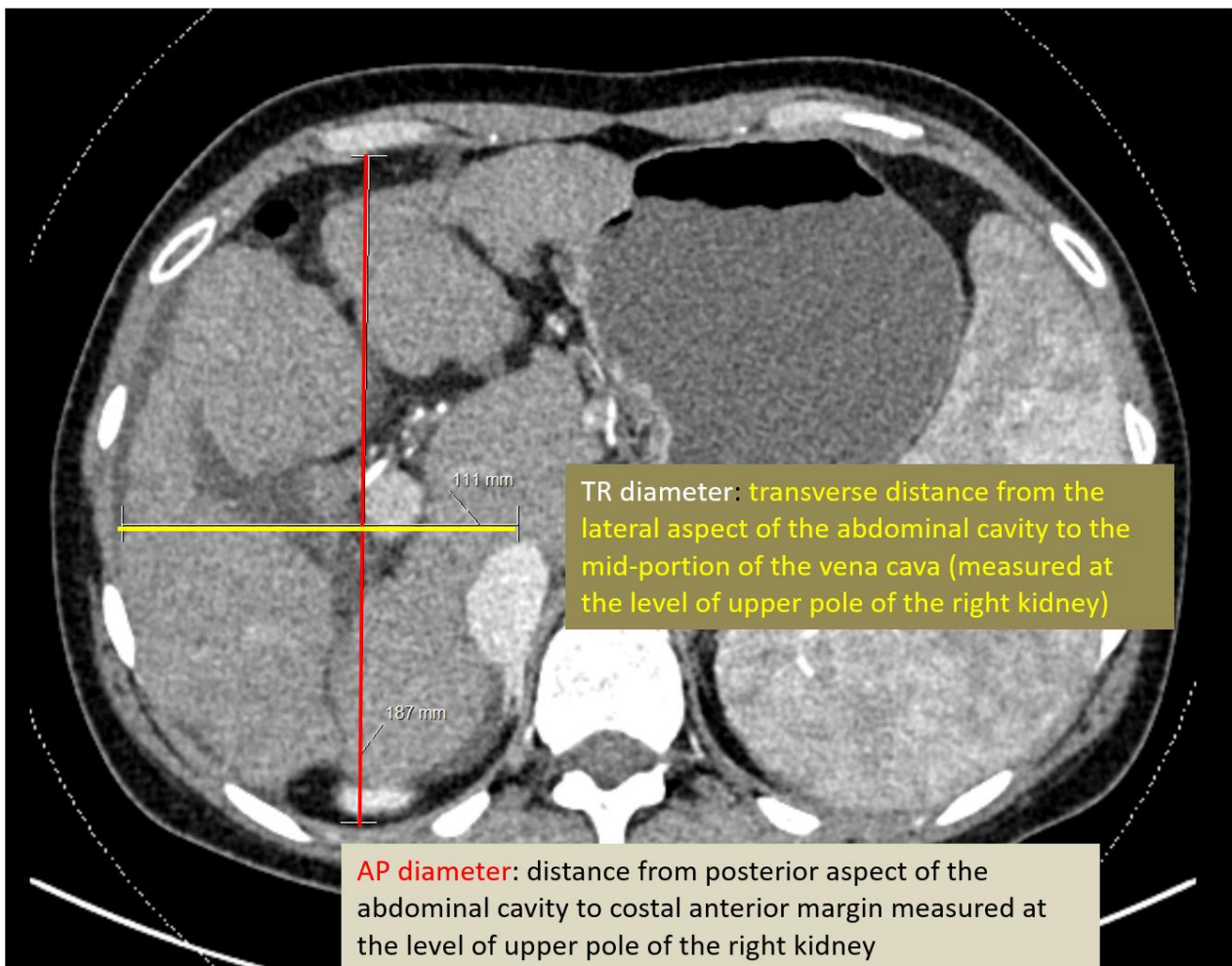


Size measurement in liver allocation

(October 2021)

For adults: The Right liver lobe is the anatomical determining factor.

- Antero-posterior diameter and transverse diameter of the right lobe



For paediatric transplantation (S2+3)

- Thickness and length of S2+3

Length: transverse distance from the umbilical fissure to the tip of S2/3



Thickness: The largest antero-posterior measurement of S2/3